

## Wright-Austin Co.

317 West Woodbridge St., Detroit, Mich.

**PRODUCTS**—Steam Traps, Strainers, Air Traps, Steam and Oil Separators, Compressed Air Purifiers, Exhaust Heads, Boiler Feeders, Alarm Water Columns, Water Gauges, Trycocks.

### "Airxpel" Bucket Type Steam Traps

Are "double duty" traps, because they automatically discharge both air and condensate.

Union connections make them easy to connect up. Also, furnished with screw connections when desired. They save money for fittings and installation labor, by having straight through horizontal pipe connections.

The Cub sizes are made in ½ in., ¾ in., 1 in. Especially suitable for individual unit drainage on heating and process equipment.

Also three "Master" sizes ½ in. to 2 in., for general service.

### "Combination" Steam Trap

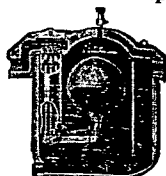
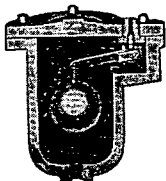
Float Type with internal thermostat air bypass and strainer. A modern designed and very successful trap for vacuum and pressure heating.

### "Victor" Low Pressure Steam Trap

A heavy duty trap for large volumes of condensation at low pressures.

### "Emergency" Float Type Steam Trap

Three valve trap with large capacity at high pressures. An exceptionally reliable trap for use in inaccessible places.



### Air Relief Trap

For relieving air from forced circulation hot water heating systems, water supply lines, closed tanks, receivers, pumps, etc.

### "Tuway" Strainer

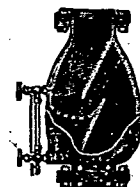
May be used two ways—as a straight-way or angle strainer, in either horizontal or vertical pipe line, because it has the choice of two inlets at right angles to one another.

For cleaning, flush through blow-off connection, or remove screen by unscrewing bottom plug.

### Separators—Steam and Oil

Type "A" Vertical Steam

Type "S" Horizontal Oil



We make separators of every type and all sizes for all pressures.

### Exhaust Head

Designed to eliminate noise and spray. Three types to select from—the "Cyclone" Heavy Duty, and Standard Galvanized Steel—also, the cast iron type, to remedy all conditions. Sizes 1 in. to 48 in.

Send for descriptive Bulletins on any of the items listed on this page.

## Yarnall-Waring Company

Manufacturers of **YARWAY** Steam Specialties

7600 Queen Street, Philadelphia, Pa.

### YARWAY IMPULSE STEAM TRAPS

**Construction**—The Yarway Impulse Steam Trap is unique in that there is only one moving part, the simple valve F. This trap is made of bar stock throughout, no castings used. Body and bonnet of cold rolled steel, cadmium plated; cap of tobin bronze, valve and seat of heat treated stainless steel. For pressures 400 to 600 lb, bonnet and cap are stainless steel.

**Operation**—When handling condensate, pressure required to lift valve F is greater than reduced pressure in control chamber K; therefore, valve F opens, allowing free discharge of condensate. As remaining condensate approaches steam temperature, flashing takes place, flow through center orifice is choked and pressure builds up in control chamber K, closing valve F.

### Advantages

**Light Weight**—Yarway traps need no support—½ in. trap weighs only 1½ lb. 2 in. trap weighs 8½ lb.

**Small Size**—They practically eliminate radiation losses—can be installed in cramped quarters—½ in. trap measures 2¼ in. long—2 in. trap, 4¼ in. long.

*Will not air bind.*

*Require no priming.*

*Insure quick heating.*

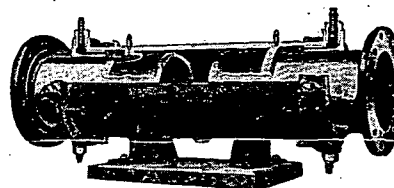
*Operate on exclusive Impulse principle (U. S. Patents No. 2,051,732 and 2,127,649.)*

*Low Price*—Often cheaper than repairing old traps.

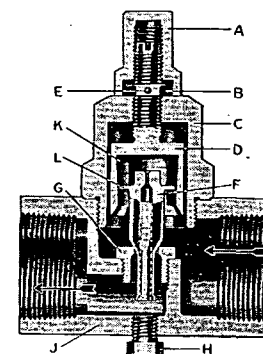
Factory set to operate at all pressures up to 400 lb (or 600 lb) without change of valve seat.

### YARWAY GUN-PAKT EXPANSION JOINTS

All-steel welded construction; light but strong. Chromium covered sliding sleeves.



A—Cap Nut E—Lock Pin L—Control Disc  
B—Lock Nut F—Valve G—Valve Seat  
C—Bonnet K—Control Chamber H—Test Plug  
D—Control Cylinder J—Body



### Prices, Weights and Dimensions

Size In.	Trap No.			Prices	Wt Lb
	400 lb 450 F	600 lb 550 F	600 lb 750 F		
½	60	70	120	\$15.00	1½
¾	61	71	121	22.00	2
1	63	73	123	31.00	2¼
1¼	64	74	124	48.00	4
1½	66	76	126	68.00	6
2	67	77	127	90.00	8½

For further information send for descriptive bulletin T-1734.

Cylinder guide and stuffing box integral, assuring perfect alignment. Internal limit stops. Gun-pakt and Gland-pakt types; Gun-pakt (illustrated) fitted with screw guns which permit insertion of plastic packing while joint is under pressure. Sizes 2 in. to 24 in., single end or double end, flanged or welding ends; 150, 300 and 400 lb pressures. For additional details send for bulletin EJ-1906.