

From: The Daily Signal [morningbell@heritage.org]
Sent: 7/1/2017 4:42:40 PM
To: Wagner, Kenneth [/o=ExchangeLabs/ou=Exchange Administrative Group (FYDIBOHF23SPDLT)/cn=Recipients/cn=048236ab99bc4d5ea16c139b1b67719c-Wagner, Ken]
Subject: CALIFORNIA ISSUES 'TRAVEL BAN' ON SOME RED STATES | How Environmental Groups Are Responding to Trump's 'Solar Wall' | Here's How Seattle's Minimum Wage Is Impacting Low-Income Workers | Congress' Inaction on Trump's Agenda Costs Nearly 1,000 Jobs Per Day

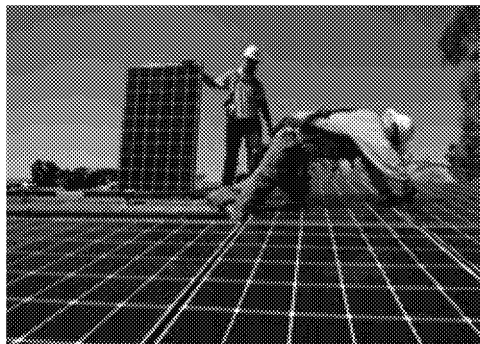
TOP FIVE

July 1, 2017



California Issues 'Travel Ban' on Some Red States

[READ THIS](#) | [TWEET IT](#) | [SHARE IT](#)



How Environmental Groups Are Responding to Trump's 'Solar Wall' Pitch

[READ THIS](#) | [TWEET IT](#) | [SHARE IT](#)



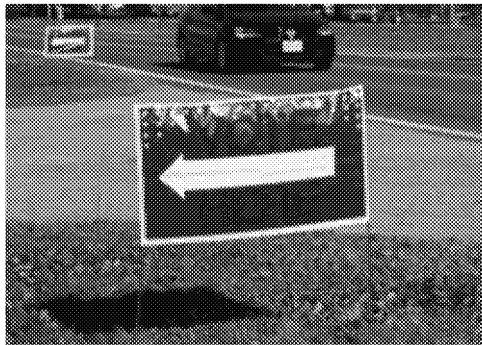
Seattle Hiked Its Minimum Wage. Here's How It's Impacting Low-Income Workers.

[READ THIS](#) | [TWEET IT](#) | [SHARE IT](#)



Congress' Inaction on Trump's Agenda Costs America Nearly 1,000 Jobs Per Day

[READ THIS](#) | [TWEET IT](#) | [SHARE IT](#)



Up to 5.7 Million Noncitizens Voted in Past Presidential Elections, Study Finds

[READ THIS](#) | [TWEET IT](#) | [SHARE IT](#)

FLASHBACK



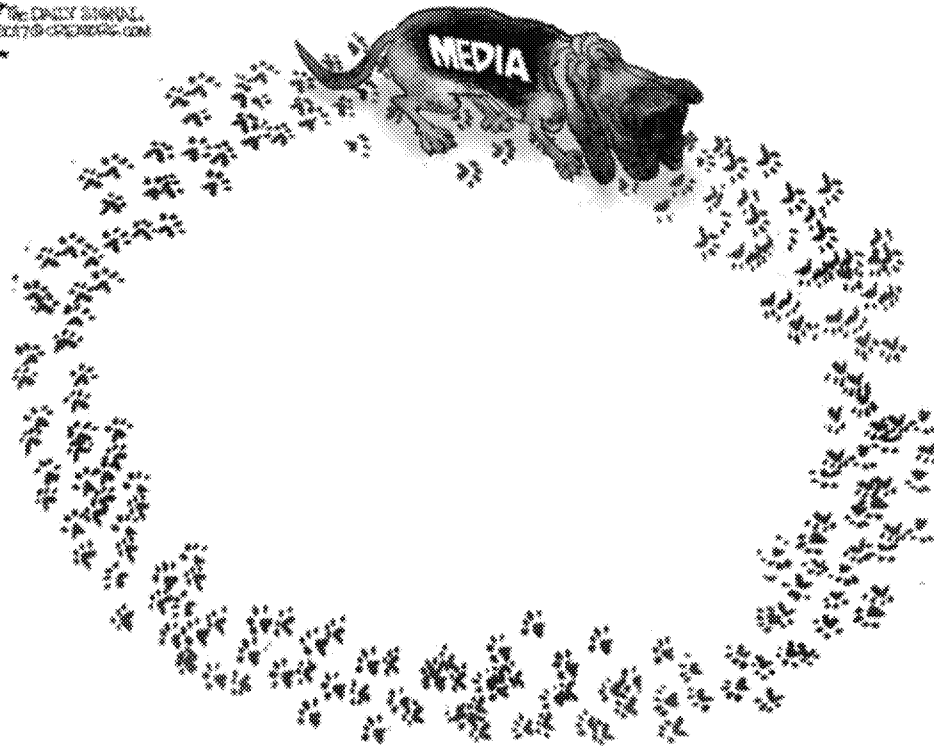
Trump's Responsible Decision to End an After-School Program That Harms Children

[READ THIS](#) | [TWEET IT](#) | [SHARE IT](#)

POLICY PICTURE

[Share on Facebook](#) | [Tweet It](#)

RAMIREZ THE DAILY SIGNAL
GO TO CREDITS.COM



@ramireztoons

The RUSSIAN COLLUSION INVESTIGATION

michaelp Ramirez.com

 THE DAILY SIGNAL



214 Massachusetts Avenue, NE
Washington, DC 20002
(800) 546-2843
[Donate to The Heritage Foundation](#)

Add morningbell@heritage.org to your address book to ensure that you receive emails from us.

You are subscribed to Heritage Foundation e-mails as wagner.kenneth@epa.gov. If you want to change your e-mail preferences, [please click here to update your subscription](#).