



Harris, Margo <mrharris@usgs.gov>

Fwd: ASN over target paper

2 messages

Werkheiser, William <whwerkhe@usgs.gov>
To: Margo Harris <mrharris@usgs.gov>

Mon, Sep 18, 2017 at 11:20 AM

----- Forwarded message -----

From: **Lodge, Cynthia** <clodge@usgs.gov>
Date: Thu, Jul 20, 2017 at 7:04 PM
Subject: Re: ASN over target paper
To: Denise Flanagan <denise_flanagan@ios.doi.gov>
Cc: Scott Cameron <scott_cameron@ios.doi.gov>, Andrea Travnicek <andrea_travnicek@ios.doi.gov>, Ryan Nichols <ryan_nichols@ios.doi.gov>, Kerry Rae <kerry_rae@ios.doi.gov>, "Ryker, Sarah" <sryker@usgs.gov>, William Lukas <wlukas@usgs.gov>, William Werkheiser <whwerkhe@usgs.gov>, "Applegate, David" <applegate@usgs.gov>, Judy Nowakowski <jnowakowski@usgs.gov>, Anne Barrett <abarrett@usgs.gov>, Adrienne Moss <adrienne_moss@ios.doi.gov>, Jason Freihage <jason_freihage@ios.doi.gov>, Jeffrey Lang <jeffrey_lang@ios.doi.gov>

My apologies I attached an incorrect version.

On Thu, Jul 20, 2017 at 6:24 PM, Lodge, Cynthia <clodge@usgs.gov> wrote:
W&S has cleared the attached Alaska North Slope over target paper for your consideration.

Any questions feel free to contact me.

--


Cynthia (Cindy) Lodge
USGS Associate Director BPI
(703) 648-4443

--

Cynthia (Cindy) Lodge
USGS Associate Director BPI
(703) 648-4443

--

William H. Werkheiser
Acting Director, U.S. Geological Survey
12201 Sunrise Valley Drive, MS 100
Reston, VA 20192
703-648-7411

 **USGS Alaska North Slope Over Target Proposal - Final v1.docx**
743K

Werkheiser, William <whwerkhe@usgs.gov>
To: Margo Harris <mrharris@usgs.gov>

Mon, Sep 18, 2017 at 11:52 AM

[Quoted text hidden]

 **USGS Alaska North Slope Over Target Proposal - Final v1.docx**

9/26/2017

DEPARTMENT OF THE INTERIOR Mail - Fwd: ASN over target paper

743K

**USGS Alaska North Slope (ANS) Oil and Gas Resource Assessment
2019 DOI Submission - Over Target Request**

USGS Energy Resources Program – Total Budget

Energy Resources Program (\$in thousands)	FY 17 Enacted	FY 18 President's Budget Request	FY 19 Scenario 2	FY 20	FY 21	FY 22
Total, Energy Resources Program	(b) (5)					

Option 1: Completion of ANS Oil and Gas Resource Assessment in FY 2022

Assessment (\$ in thousands)	FY 17	FY 18	FY 19	FY 20	FY 21	FY 22
National Petroleum Reserve – Alaska (NPRA)	(b) (5)	(b) (5)	(b) (5)	(b) (5)	(b) (5)	(b) (5)
ANWR – 2-D						
ANWR – 3-D						
Central North Slope						
West of NPRA						
Total, ANS Assessment						

Option 2: Completion of ANS Oil and Gas Resource Assessment in FY 2020 (ACCELERATED)

Assessment (\$ in thousands)	FY 17	FY 18	FY 19	FY 20	FY 21	FY 22
National Petroleum Reserve – Alaska (NPRA)	(b) (5)	(b) (5)	(b) (5)	(b) (5)	(b) (5)	(b) (5)
ANWR – 2-D						
ANWR – 3-D						
Central North Slope						
West of NPRA						
Total, ANS Assessment						

Issue:

(b) (5)

(b) (5)

Background:

(b) (5)

Proposed Activity:

(b) (5)

(b) (5)

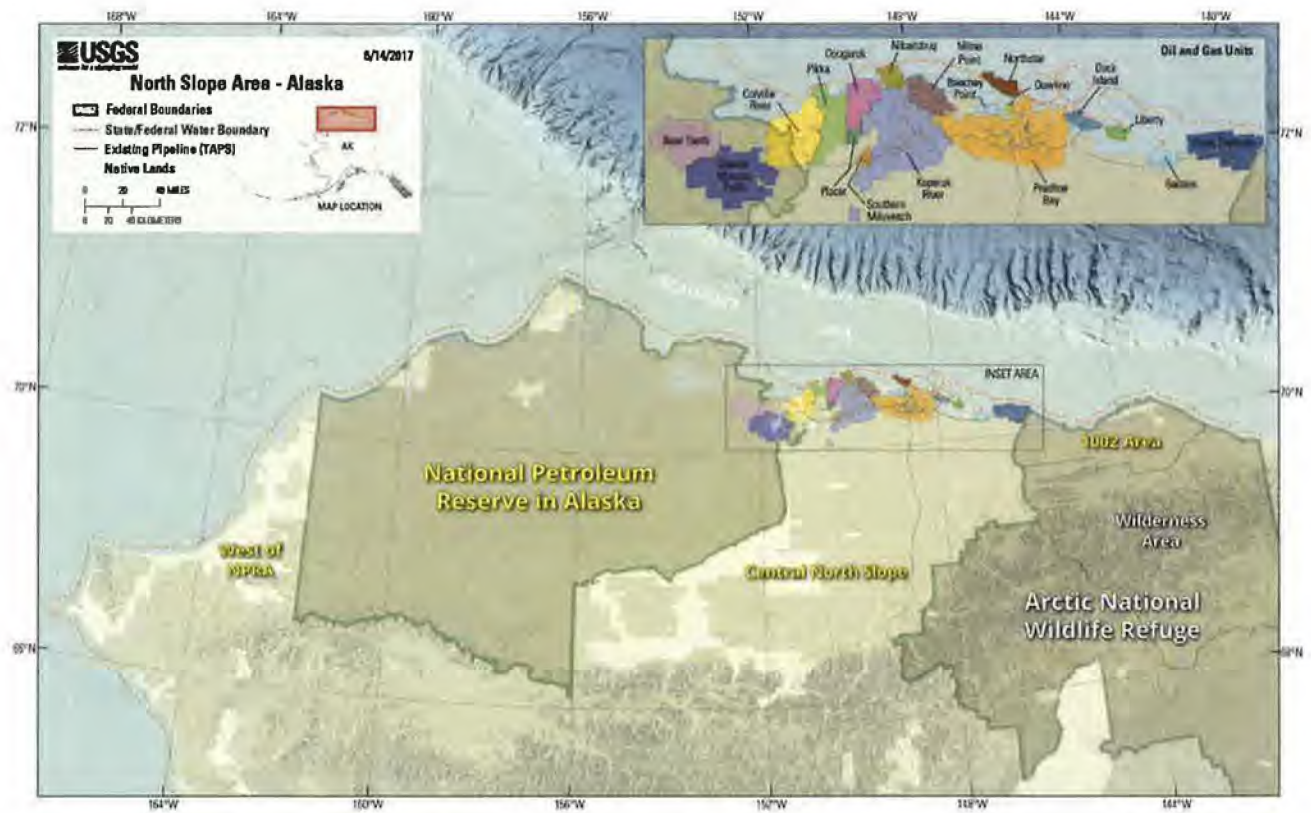


Figure 1: Map of Arctic Alaska showing oil and gas assessment areas (indicated by yellow text). Oil and gas units (oil fields, current or planned) shown in inset map.

Additional Considerations:

(b) (5)

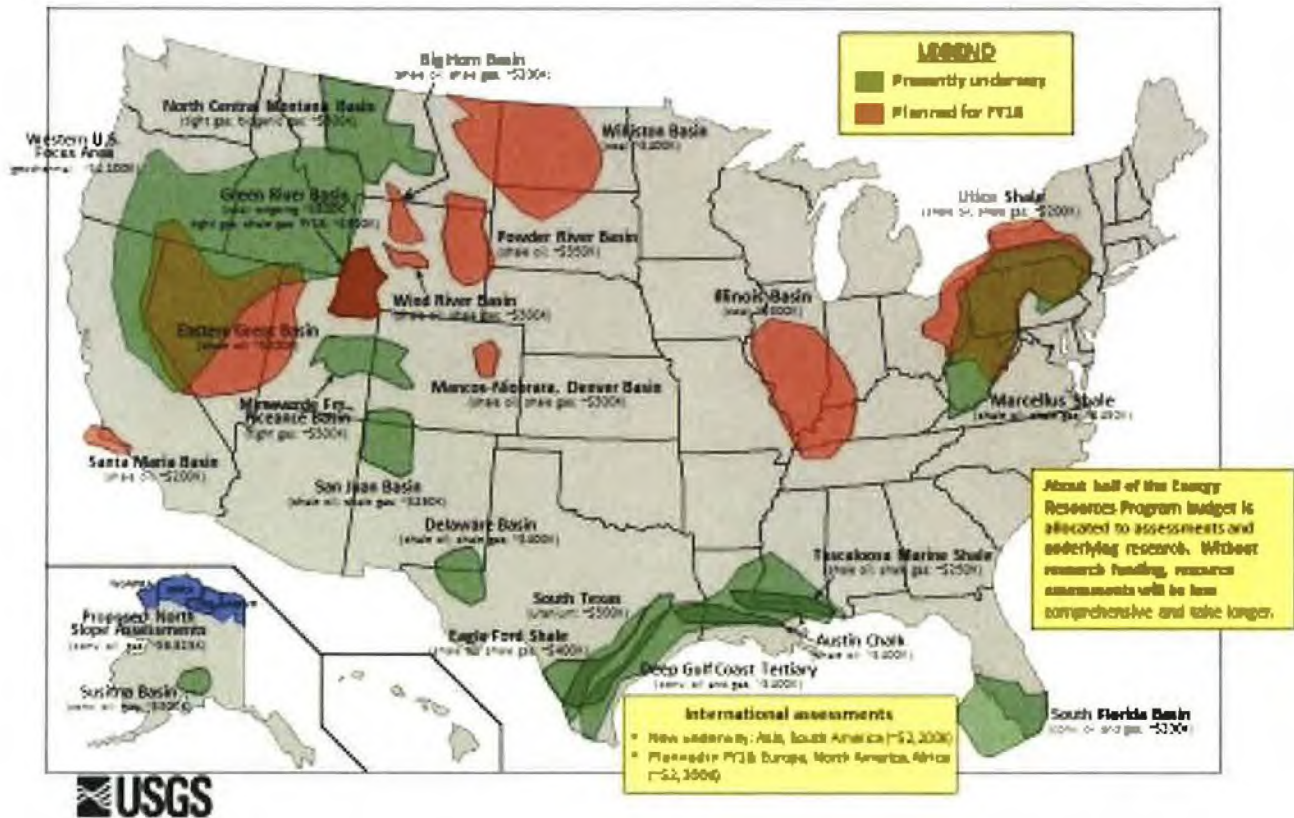


Figure 2: Map of ERP resource assessments planned for the remainder of FY2017 and for FY 2018.

**USGS Alaska North Slope (ANS) Oil and Gas Resource Assessment
2019 DOI Submission - Over Target Request**

USGS Energy Resources Program – Total Budget

Energy Resources Program (\$in thousands)	FY 17 Enacted	FY 18 President's Budget Request	FY 19 Scenario 2	FY 20	FY 21	FY 22
Total, Energy Resources Program	(b) (5)					

Option 1: Completion of ANS Oil and Gas Resource Assessment in FY 2022

Assessment (\$ in thousands)	FY 17	FY 18	FY 19	FY 20	FY 21	FY 22
National Petroleum Reserve – Alaska (NPRA)	(b) (5)					
ANWR – 2-D						
ANWR – 3-D						
Central North Slope						
West of NPRA						
Total, ANS Assessment	(b) (5)					

Option 2: Completion of ANS Oil and Gas Resource Assessment in FY 2020 (ACCELERATED)

Assessment (\$ in thousands)	FY 17	FY 18	FY 19	FY 20	FY 21	FY 22
National Petroleum Reserve – Alaska (NPRA)	(b) (5)					
ANWR – 2-D						
ANWR – 3-D						
Central North Slope						
West of NPRA						
Total, ANS Assessment	(b) (5)					

Issue:

(b) (5)

(b) (5)

Background:

(b) (5)

Proposed Activity:

(b) (5)

(b) (5)

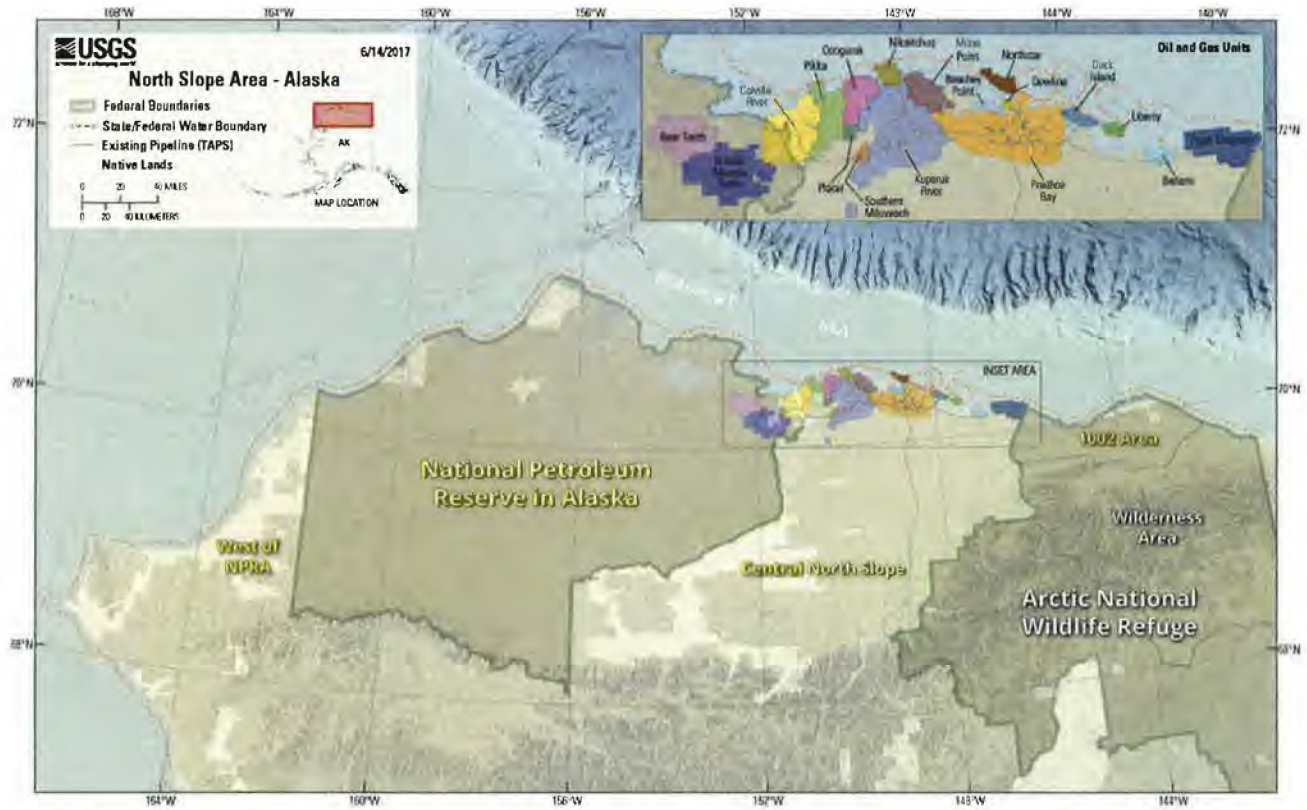


Figure 1: Map of Arctic Alaska showing oil and gas assessment areas (indicated by yellow text). Oil and gas units (oil fields, current or planned) shown in inset map.

Additional Considerations:

(b) (5)

