

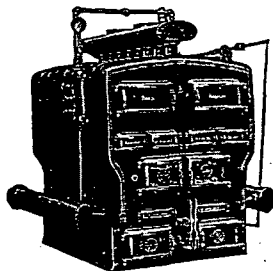
Pierce, Butler & Pierce Mfg. Corp.

General Sales Offices
41 EAST 42nd STREET NEW YORK, N. Y.

For List of Factories and Branches, see Page 549

Cast iron water boilers 100 to 23,450 sq. ft. capacity. Cast iron steam boilers 325 to 14,200 sq. ft. capacity. Firebox heating boilers, capacity steam radiation 2,500 to 25,000 sq. ft.; capacity water radiation 4,000 to 40,000 sq. ft. Radiators—all types

The
Pierce-American
Boiler



A 30-year record of
proved successful
performance

Sizes and Dimensions

No.*	Sections	Length	BOILER AND HEADERS		Height Water Line on S. B.	No. and Size, Outlets	No. and Size, Returns	Smoke Pipe Dia.	Size of Flue	Chimney Height	CAPACITY SQ. FT.	
			Width	Height							Steam Boilers	Water Boilers
214	4	47	45	56 1/8	40 1/4	2-3	2-3	9 1/2	10x10	30	600	1000
215	5	55	45	56 1/8	40 1/4	2-3	2-3	9 1/2	10x10	30	800	1325
216	6	63	45	56 1/8	40 1/4	2-3	2-3	9 1/2	10x10	35	1000	1650
265	5	55	51	64 1/2	47 7/8	2-3	2-3	11 3/4	12x12	35	1400	2325
266	6	63	51	64 1/2	47 7/8	2-4	2-4	11 3/4	12x16	35	1750	2900
267	7	71	51	64 1/2	47 7/8	2-4	2-4	11 3/4	12x16	40	2100	3475
268	8	79	51	64 1/2	47 7/8	2-4	2-4	11 3/4	16x16	40	2450	4050
325	5	55	59 1/4	67	49	2-4	2-4	14	12x16	35	1700	2825
326	6	63	59 1/4	67	49	2-5	2-5	14	12x16	40	2250	3700
327	7	71	59 1/4	67	49	2-5	2-5	14	16x16	40	2800	4625
328	8	79	59 1/4	67	49	2-5	2-5	14	16x16	45	3350	5525
329	9	87	59 1/4	67	49	2-5	2-5	14	16x20	50	3900	6450
3210	10	95	59 1/4	67	49	2-5	2-5	14	20x20	60	4450	7350
405	5	55	66 1/2	69 1/4	51	2-4	2-4	15 1/4	16x16	45	2600	4300
406	6	63	66 1/2	69 1/4	51	2-5	2-5	15 1/4	16x20	45	3250	5375
407	7	71	66 1/2	69 1/4	51	2-5	2-5	15 1/4	16x20	50	3900	6450
408	8	79	66 1/2	69 1/4	51	2-5	2-5	15 1/4	20x20	50	4550	7500
409	9	87	66 1/2	69 1/4	51	2-5	2-5	15 1/4	20x20	55	5200	8600
4010	10	95	66 1/2	69 1/4	51	2-5	2-5	15 1/4	20x20	55	5850	9650
4011	11	103	66 1/2	69 1/4	51	2-5	2-5	15 1/4	20x20	60	6500	10725
4012	12	111	66 1/2	69 1/4	51	2-5	2-5	15 1/4	20x24	60	7150	11800
466	6	68	79	82	55 3/4	2-6	2-6	19 1/4	24x24	65	5400	8925
467	7	76	79	82	55 3/4	2-6	2-6	19 1/4	24x24	70	6500	10725
468	8	84	79	82	55 3/4	2-6	2-6	19 1/4	24x24	75	7600	12550
469	9	92	79	82	55 3/4	2-6	2-6	19 1/4	24x28	80	8700	14350
4610	10	100	79	82	55 3/4	2-6	2-6	19 1/4	24x28	85	9800	16150
4611	11	108	79	82	55 3/4	2-6	2-6	19 1/4	28x28	95	10900	18000
4612	12	116	79	82	55 3/4	2-6	2-6	19 1/4	28x28	100	12000	19825
4613	13	124	79	82	55 3/4	2-6	2-6	19 1/4	28x28	105	13100	21625
4614	14	132	79	82	55 3/4	2-6	2-6	19 1/4	28x32	110	14200	23450

*Steam boilers are designated by the letter "S" before the number, as S-214, S-215, etc. Water boilers are designated by the letter "W," as W-214, W-215, etc.

All measurements are in inches, except where otherwise noted. Special sizes or location of tappings can be furnished at prices shown in discount sheet. Blank grates sections for brick fire wall to reduce size of grate will be supplied without extra charge with boiler if so ordered.

(See page 549, Valve Section)

PIERCE FIREBOX BOILERS

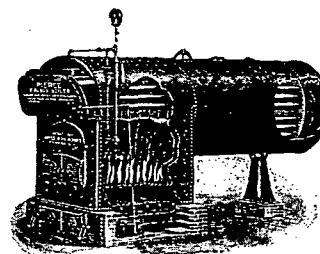
Built by

Ames Iron Works

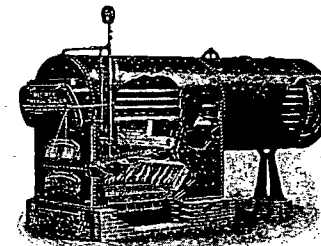
Division of

Pierce, Butler & Pierce Manufacturing Corporation

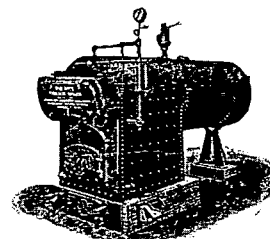
OSWEGO, N. Y.



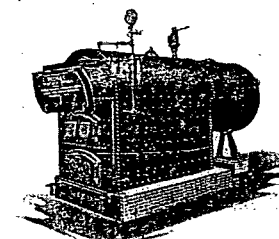
Series 600
For Description, see p. 356.



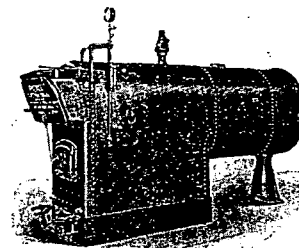
Series 700
For Description, see p. 357.



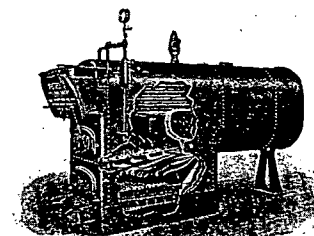
Series 800
For Description, see p. 358.



Series 900
For Description, see p. 359.



Series 1000
For Description, see p. 360.



Series 2000
For Description, see p. 361.