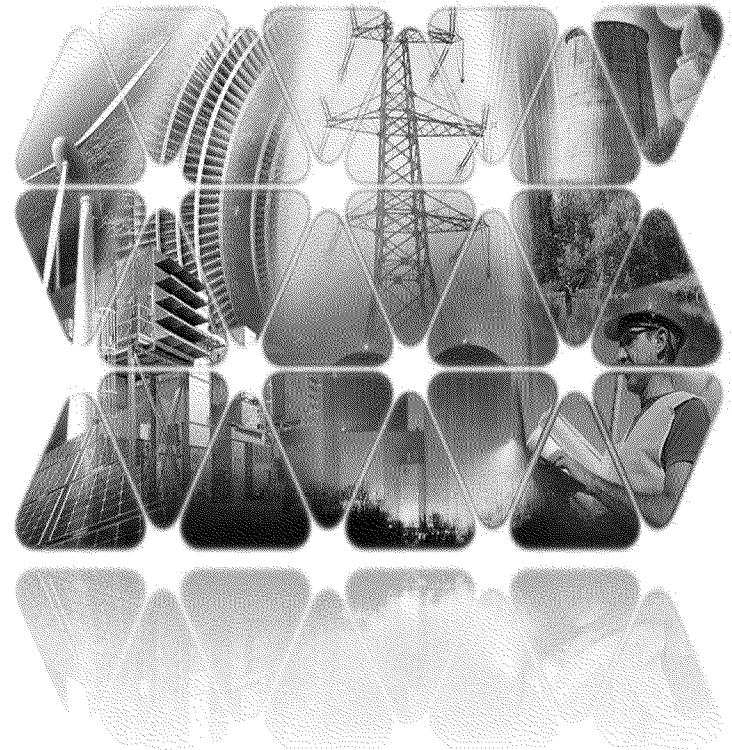


36th EPRI Seminar on Fuels, Power Markets and Resource Planning

Electric Power Research Institute

Washington, DC
November 8-9, 2016



Safety Message – Emergency Contact Information

- 2015 EPRI member emergency incident
- It is important for emergency responders to have access to your emergency contact information
- Add emergency info into your iPhone health app
 - Emergency contact information
 - **Medication** and other pertinent personal information
 - 1st responders can locate this info without a password
- Get CPR certified and encourage your colleagues
- Fill in “emergency contact” information when registering online for all EPRI events

Who You Gonna Call?



EPRI DC Office WiFi Access

- SSID: **EPRI Guest**
- Username: **Wdcguest682**
- Password: **Wireless3**



Welcome & Introductions



This Seminar Is Hosted by EPRI's Research Program on *Integrated Portfolio Planning & Market Analysis (PS-178B)*

Project Set 178B is focused on:

- **Integrated Generation, Transmission & Distribution Planning**
 - Focus on new developments in resource planning
 - Explore and develop new analysis tools and methods to address current and future resource planning issues.

- **Fuels and Power Market Analysis**
 - Dynamics of the natural gas markets and prices, and interactions between fuels and power markets
 - Potential impact of large-scale deployment of utility-scale, variable renewables on wholesale power markets, dispatch, and economic value of renewable and fossil-fired generation resources.
 - Evolution of wholesale power markets

2017 Seminar Topics

- Natural Gas Supply, Demand and Pricing
- Evolution of Electric Sector Resource Planning
- Wholesale Power Markets, Grid Reliability and Resiliency

Information Packets

- Agenda, participant list and speaker bios
- Name tag & table card



Agenda — Day 1 (Wed. Nov 8th)

TIME	TOPIC
8:30 a.m.	<i>Registration and Continental Breakfast</i>
9:00 a.m.	Welcome, Introductions & Meeting Goals
9:15 – 11:45 a.m.	Session 1 — Natural Gas Supply, Demand, and Pricing
10:45 – 11:00 a.m.	<i>Morning Break (15 min)</i>
11:45 – 1:00 p.m.	<i>Lunch</i>
12:15 – 12:45 p.m.	Luncheon Address — Sarah Dravis, Senior Counsel and Associate Administrator, US EPA
1:00 – 4:45 p.m.	Session 2 — Evolution of Electric System Resource Planning
2:30 – 2:45 p.m.	<i>Afternoon Break (15 min)</i>
6:30 – 8:30 p.m.	<i>EPRI PS-178(b) Member Dinner</i>

Agenda — Day 2 (Thurs. Nov 9th)

TIME	TOPIC
8:30 a.m.	<i>Continental Breakfast</i>
9:00 a.m.	Morning Keynote — <i>Catherine Jereza, Deputy Assistant Secretary, U.S. DOE</i>
9:00 –12:15 p.m.	Session 3 — Wholesale Electricity Markets and Grid Reliability and Resiliency
10:30 –10:00 a.m.	<i>Morning Break (15 min)</i>
12:15 –1:00 p.m.	<i>Lunch and Roundtable Discussion</i>

“Chatham House” Rules of Engagement

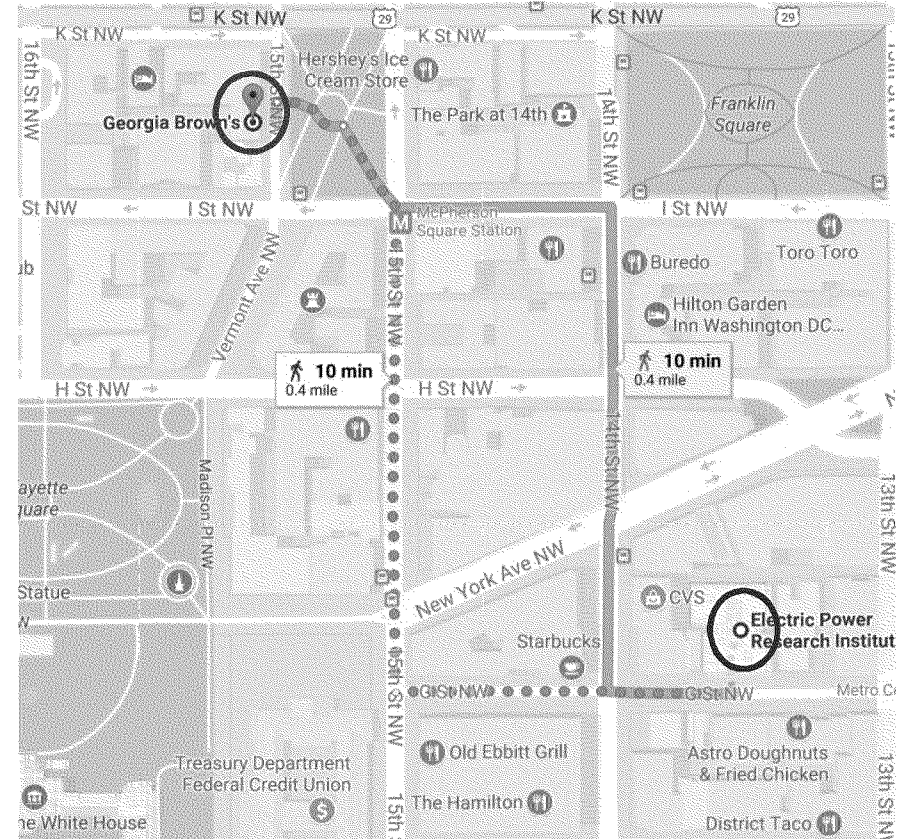
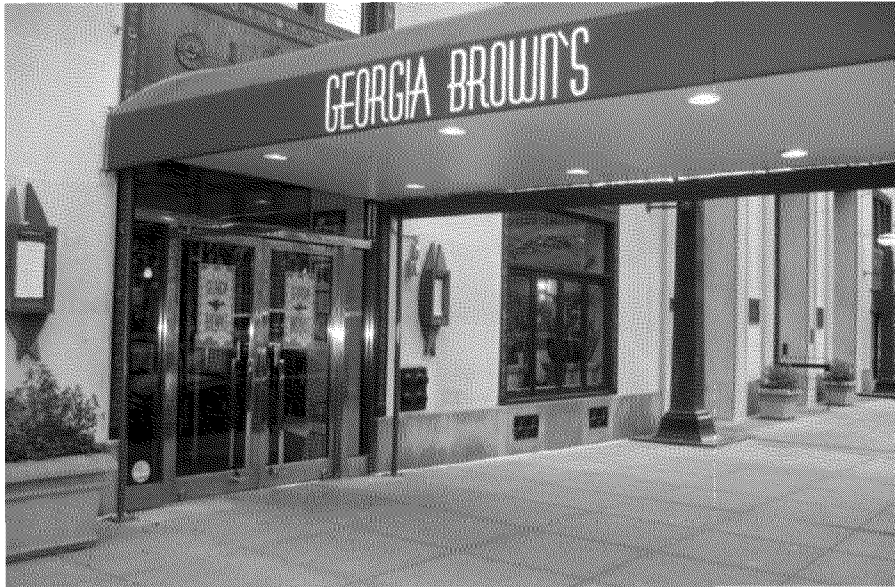
- Today’s seminar is designed to facilitate highly interactive discussion. Please speak up and ask questions!!

- “Chatham House” rules:

*Participants are free to use the information received, but neither the **identity** nor the **affiliation** of the speaker(s), nor that of **any other participant**, may be revealed.*

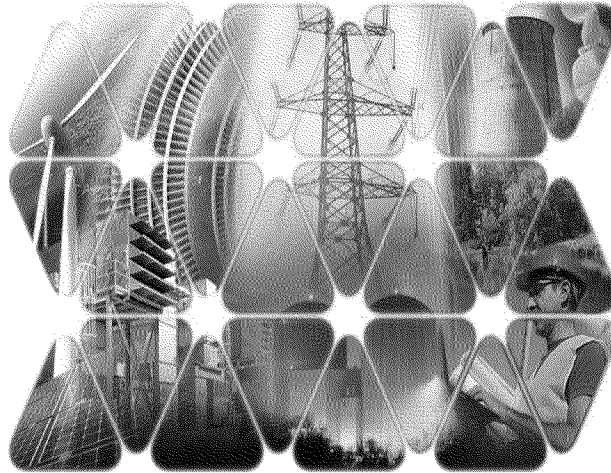
- No press is attending the seminar.
- The seminar is not being recorded, and no formal meeting minutes will be produced or published.

EPRI Member Dinner Tonight @ Georgia Brown's



- **Time:** 6:30 p.m.
- **Place:** Georgia Brown's
950 15th St NW,
Washington, DC 20005
Phone: (202) 393-4499

Thank You



Together...Shaping the Future of Electricity

Adam Diamant
Technical Executive
Energy & Environmental Analysis Program
PS-178B Program Manager
Tel: 510-260-9105
Email: adiamant@epri.com