



Harris, Margo <mrharris@usgs.gov>

Fwd: Over Target Papers

1 message

Werkheiser, William <whwerkhe@usgs.gov>
To: Margo Harris <mrharris@usgs.gov>

Mon, Sep 18, 2017 at 11:53 AM

----- Forwarded message -----

From: **Lodge, Cynthia** <clodge@usgs.gov>

Date: Thu, Jul 13, 2017 at 1:05 PM

Subject: Over Target Papers

To: Scott Cameron <scott_cameron@ios.doi.gov>

Cc: Andrea Travnicek <andrea_travnicek@ios.doi.gov>, Kerry Rae <kerry_rae@ios.doi.gov>, Ryan Nichols <ryan_nichols@ios.doi.gov>, William Lukas <wlukas@usgs.gov>, William Werkheiser <whwerkhe@usgs.gov>, "Applegate, David" <applegate@usgs.gov>, Anne Barrett <abarrett@usgs.gov>, Judy Nowakowski <jnowakowski@usgs.gov>, Joanne Taylor <jctaylor@usgs.gov>

Please find attached for your review is an updated Alaska North Slope paper and the EEW as requested by Jim Casen.

The North Slope paper was updated to show an accelerated budget profile to complete a year earlier. This increases the amount of money required in 2019. We also updated the 2017 number to reflect what we could do instead of what is needed.



These are both due to POB today. Please let us know if you have any comments.

v/r

--

Cynthia (Cindy) Lodge
USGS Associate Director BPI
(703) 648-4443

William H. Werkheiser
Acting Director, U.S. Geological Survey
12201 Sunrise Valley Drive, MS 100
Reston, VA 20192
703-648-7411

2 attachments **USGS Alaska North Slope Over Target Proposal - ACCELERATED.docx**
627K **EEW overtarget request.docx**
25K

**USGS Alaska North Slope (ANS) Oil and Gas Resource Assessment
2019 DOI Submission - Over Target Request**

Present Schedule

Assessment (\$ in thousands)	FY 17	FY 18	FY 19	FY 20	FY 21	FY 22
National Petroleum Reserve – Alaska (NPRA)	(b)	(5)	(5)	(5)	(5)	(5)
ANWR – 2-D						
ANWR – 3-D						
Central North Slope						
West of NPRA						
Total, ANS Assessment						

*Note: (b) (5)

Accelerated Schedule

Assessment (\$ in thousands)	FY 17	FY 18	FY 19	FY 20	FY 21	FY 22
National Petroleum Reserve – Alaska (NPRA)	(b)	(5)	(5)	(5)	(5)	(5)
ANWR – 2-D						
ANWR – 3-D						
Central North Slope						
West of NPRA						
Total, ANS Assessment						

*Note: (b) (5)

Issue:

(b) (5)

Background:

(b) (5)

(b) (5)

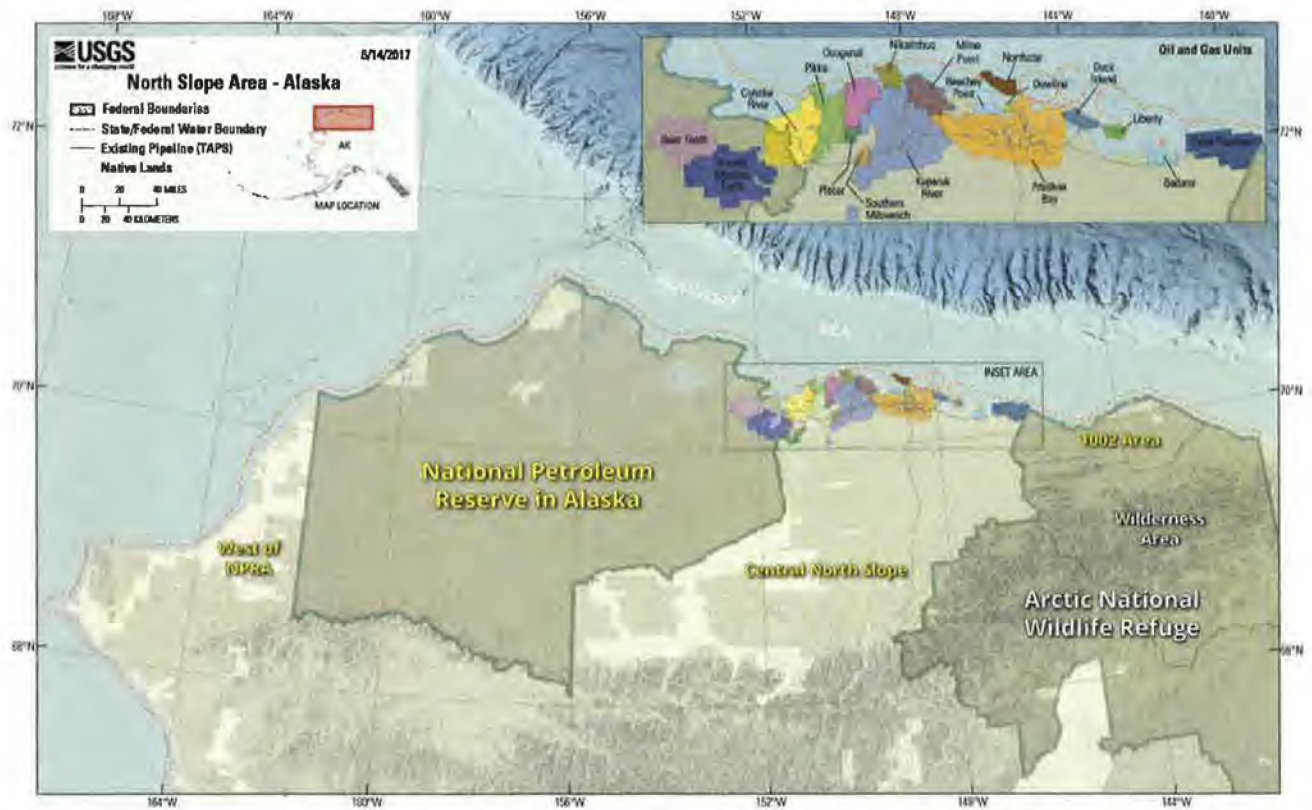


Figure 1: Map of Arctic Alaska showing oil and gas assessment areas (indicated by yellow text). Oil and gas units (oil fields, current or planned) shown in inset map.

ISSUE: USGS EARTHQUAKE EARLY WARNING

Annual Budget	FY16	FY17	FY18	FY19	FY20	FY21	FY22
Fed. Appropriated/Requested Funds (*1)	(b)		(5)				
Calif. State Funds – Build-out (*2)	(b)		(5)				
Total Appropriated or Required (*3)	(b)		(5)				
Federal Funds - spending breakdown	(b)		(5)				
Build-Out – CA-OR-WA	(b)		(5)				
Operations – CA-OR-WA	(b)		(5)				
IT Security and Compliance (*4)	(b)		(5)				
Education and Outreach (*5)	(b)		(5)				
Alaska Expansion Costs	(b)		(5)				
Build-Out - Alaska (*6)	(b)		(5)				
Operations – Alaska (*7)	(b)		(5)				

(b) (5)

I. KEY POINTS

(b) (5)

(b) (5)

II. OPPORTUNITIES AND CHALLENGES

(b) (5)

III. BACKGROUND

(b) (5)

IV. PREPARED BY: William Leith, U.S. Geological Survey, Senior Science Advisor for Earthquake and Geologic Hazards. 703-648-6786

DATE: 12 July 2017