

**To:** Joseph Balash[joseph\_balash@ios.doi.gov]; Ted Murphy[t75murph@blm.gov]; Serena Sweet[ssweet@blm.gov]; Eileen Frost[efrost@blm.gov]; Seidlitz, Joseph (Gene)[gseidlitz@blm.gov]; BLM\_AK AKSO\_NPR\_A\_IAP\_Admin Record[blm\_ak\_akso\_npr\_a\_iap\_admin\_record@blm.gov]; Chad Ricklefs[chad.ricklefs@emp.si.com]; Katie Patterson[katie.patterson@emp.si.com]; Kate Krebs[kate.krebs@emp.si.com]; Michael Gieryic[mike.gieryic@sol.doi.gov]

**From:** Rice, Stephanie

**Sent:** 2019-03-13T23:09:48-04:00

**Importance:** Normal

**Subject:** NPR-A IAP Alternatives Development Progress to Date

**Received:** 2019-03-13T23:10:49-04:00

[2013 NPR-A IAP ROD Map.pdf](#)

[NPRA\\_IAP\\_AltDev\\_AltD\\_DATAVERIFY\\_20190313.pdf](#)


[NPRA\\_IAP\\_AltDev\\_AltC\\_DATAVERIFY\\_20190313 \(1\).pdf](#)

Joe and Ted, attached are two maps with ROUGH depictions of our preliminary Alternative C (compromise alternative) and Alternative D (development alternative). These maps do not show the changes proposed for the Utukok River uplands special area under each alternative, but I will talk through them. We have not discussed Alternative B (conservation alternative) very much yet and do not have a map for it. Alternative A will be the current management plan (attached).

I will walk us through these maps tomorrow during our check in at 0830 AK time. Please forward this to anyone who will be attending tomorrow's phone call.

Stephanie Rice  
Planning and Environmental Coordinator  
BLM Alaska - Division of Resources  
Desk: (907) 271-3202

Alternatives development: DATA VERIFY

Alternative C 

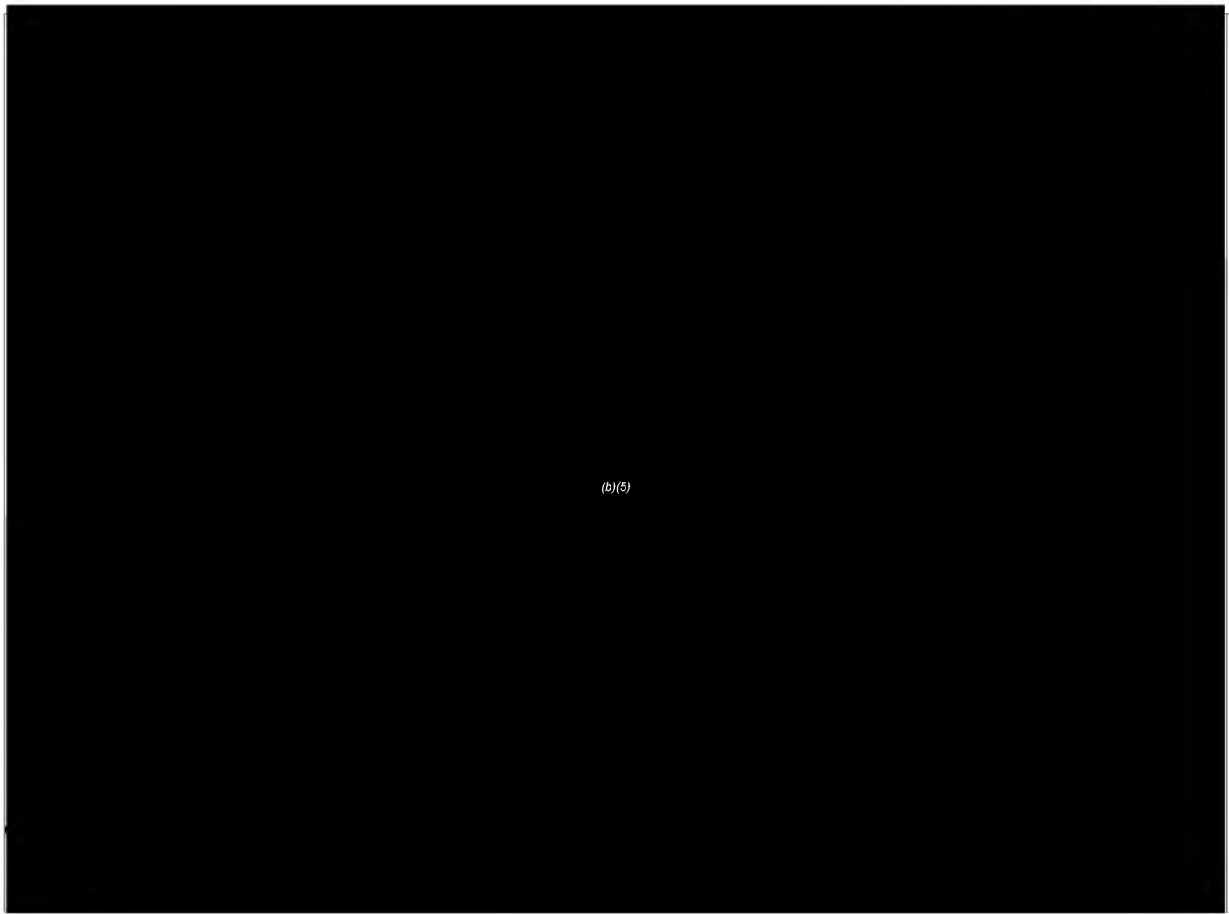
(b)(5)

Alternatives development: DATA VERIFY

Alternative D

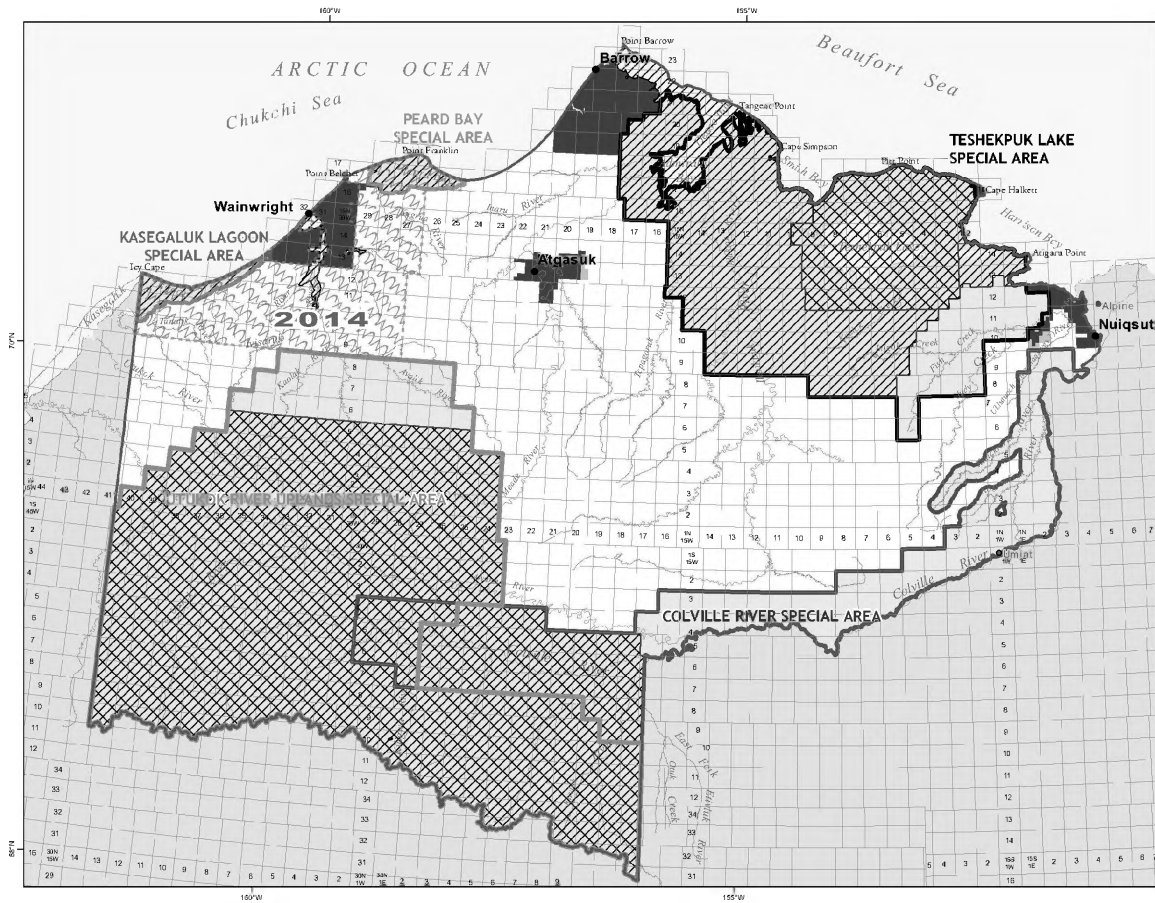


U.S. DEPARTMENT OF THE INTERIOR | BUREAU OF LAND MANAGEMENT | ALASKA | NATIONAL PETROLEUM RESERVE IN ALASKA (NAPRES)



(b)(5)

(b)(5)



**MAP 2-2-2**  
**Preferred Alternative**  
**B-2**  
**Land Allocations**

**Oil & Gas Leasing and Infrastructure**

- Unavailable for leasing or exploratory drilling
- Unavailable for leasing and no new non-sub-sistence infrastructure or exploratory drilling; all other BLM-managed lands would be available for applications for permanent infrastructure in support of offshore oil and gas development
- Leasing deferred to 2014

**Special Areas**

- Colville River
- Teshekpuk Lake
- Utukok River Uplands
- Peard Bay
- Kasegaluk Lagoon

**Land Status**

- Native Patent or IC
- Native Selected
- NPR-A Boundary

0 6 12 24 36 48 Miles

No warranty is made by the Bureau of Land Management as to the accuracy, reliability, or completeness of these data for individual use or aggregate use with other data, or for purposes not intended by BLM. Spatial information may not meet National Map Accuracy Standards. This information may be updated without notification. For official land status information refer to Cadastral Survey plats, Master Title Plats and land status case-files. Projection: Albers Conic Equal Area referencing NAD83.

**Bureau of Land Management - Alaska**  
**National Petroleum Reserve - Alaska**  
**Final IAP/EIS**