



Nash, Kim (AI) <knash@blm.gov>

Fwd: Help Needed with WSA info for Ginaforte request [Deadline Wed Noon]

1 message

Al Nash <al_nash@blm.gov>

Wed, Aug 30, 2017 at 9:54 AM

To: Mark Albers <malbers@blm.gov>, Peter McFadden <pmcfadden@blm.gov>, Bruce Reid <breid@blm.gov>, Joshua Chase <jchase@blm.gov>

Perhaps I'm missing it... but I don't recall seeing info for Upper Missouri River Breaks yet. I'll assume the info from the RMP is current and correct unless told otherwise.

Al Nash
Chief of Communications
Montana/Dakotas State Office
Bureau of Land Management
Office 406.896.5260
Cell 406.690.0790
Email al_nash@blm.gov

*"This report, by its very length, defends itself against the risk of being read."
-- Winston Churchill*

----- Forwarded message -----

From: **Al Nash** <al_nash@blm.gov>

Date: Mon, Aug 28, 2017 at 3:24 PM

Subject: Help Needed with WSA info for Ginaforte request [Deadline Wed Noon]

To: James Sparks <jsparks@blm.gov>, Joe Ashor <jashor@blm.gov>, Cornelia Hudson <chudson@blm.gov>, Patrick Gunderson <pgunderson@blm.gov>, Peter McFadden <pmcfadden@blm.gov>, Thomas Darrington <tdarrington@blm.gov>, Todd Yeager <tyeager@blm.gov>

Cc: Jon Raby <jraby@blm.gov>, Mary D'Aversa <mdaversa@blm.gov>

All:

Lesley Robinson, Rep. Gianforte's State Director, has a meeting with Jon on Wednesday afternoon.

One of the subjects she wants to talk about is WSAs.

I reached out to our GIS staff here in the State Office, who was able to provide me a nice map and an Excel spreadsheet with some WSA info.

I was warned that the acreage was based on GIS shape info and would NOT agree with "actual" acreage figures.

After sampling some RMPs online, I also noticed the Wilderness recommendation "suitability" may not be right in all cases in the GIS database.

12/4/2017

DEPARTMENT OF THE INTERIOR Mail - Fwd: Help Needed with WSA info for Gianforte request [Deadline Wed Noon]

Would you please have someone look at the info for your office on the attached spreadsheet... correct as appropriate... and push back to me no later than Noon Wednesday?

Thanks!

Al Nash
Chief of Communications
Montana/Dakotas State Office
Bureau of Land Management
Office 406.896.5260
Cell 406.690.0790
Email al_nash@blm.gov

"This report, by its very length, defends itself against the risk of being read."
-- Winston Churchill

2 attachments

 **BLM WSA_Rep Gianforte_2017Aug28.pdf**
5148K

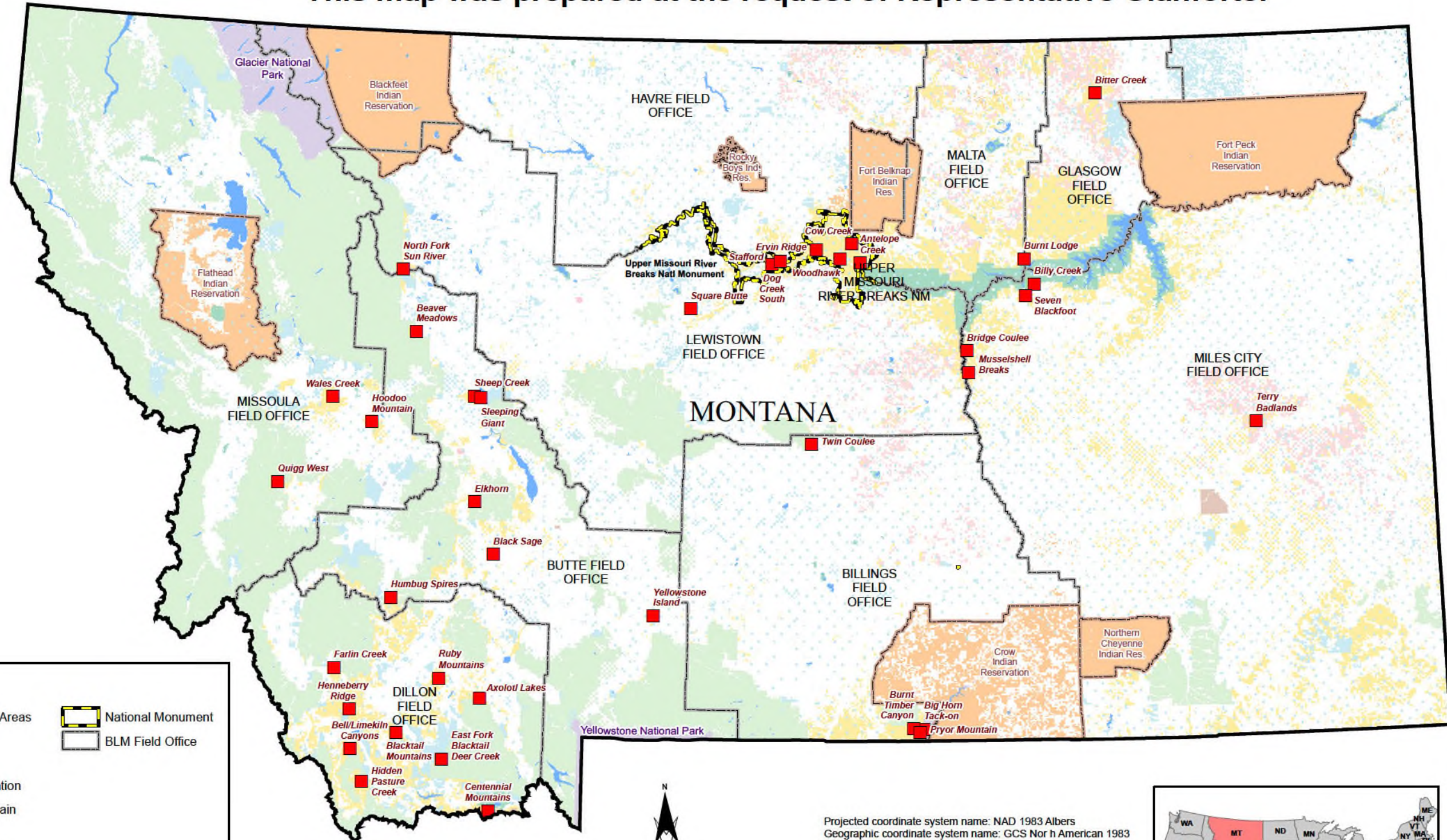
 **WSA Table from GIS.xlsx**
16K

Wilderness Study Areas

Bureau of Land Management - Montana

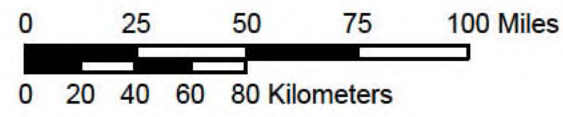
August 28, 2017

This map was prepared at the request of Representative Gianforte.



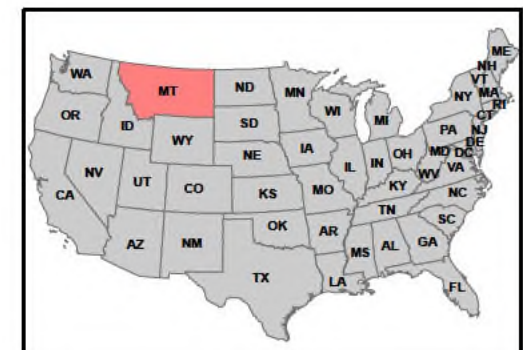
Legend

- Wilderness Study Areas
- National Monument
- Surface Management**
- BIA
- BLM - Land Utilization
- BLM - Public Domain
- Dept. of Defense
- National Park Service
- Private
- Division of State Lands
- US Fish and Wildlife Service
- US Forest Service
- USDA
- BLM Field Office



Projected coordinate system name: NAD 1983 Albers
 Geographic coordinate system name: GCS North American 1983
 Details
 Map Projection Name: Albers Conical Equal Area
 Standard Parallel: 43.500000
 Standard Parallel: 48.000000
 Longitude of Central Meridian: -106.000000
 Latitude of Projection Origin: 42.500000
 False Easting: 0.000000
 False Northing: 0.000000

No warranty is made by the BLM as to the accuracy, reliability, or completeness of this data for individual use or aggregate use with other data.



U.S. DEPARTMENT OF THE INTERIOR
 BUREAU OF LAND MANAGEMENT
 MONTANA/DAKOTA STATE OFFICE
 BILLINGS, MONTANA

NLCS_ID	NLCS_NAME	CASEFILE_N	WSA_RCMND	ADMIN_ST	ADMU_NAME	Acres
NLCS000513	Twin Coulee	MT-067-212	Non-suitable	MT	BILLINGS FIELD OFFICE	6,840
NLCS000504	Pryor Mountain	MT-067-206	Suitable	MT	BILLINGS FIELD OFFICE	15,664
NLCS000490	Burnt Timber Canyon	MT-067-205	Suitable	MT	BILLINGS FIELD OFFICE	3,516
NLCS000483	Big Horn Tack-on	MT-067-207	Suitable	MT	BILLINGS FIELD OFFICE	2,694
NLCS000516	Yellowstone Island	MT-075-133	Non-suitable	MT	BUTTE FIELD OFFICE	90
NLCS000509	Sleeping Giant	MT-075-111A	No recommendation	MT	BUTTE FIELD OFFICE	6,535
NLCS000508	Sheep Creek	MT-075-111B	No recommendation	MT	BUTTE FIELD OFFICE	3,946
NLCS000501	Humbug Spires	MT-ISA-003	Non-suitable	MT	BUTTE FIELD OFFICE	2,403
NLCS000501	Humbug Spires	MT-ISA-003	Suitable	MT	BUTTE FIELD OFFICE	8,933
NLCS000495	Elkhorn	MT-075-114	No recommendation	MT	BUTTE FIELD OFFICE	3,567
NLCS000486	Black Sage	MT-075-115	Non-suitable	MT	BUTTE FIELD OFFICE	5,963
NLCS000481	Beaver Meadows	MT-075-110	No recommendation	MT	BUTTE FIELD OFFICE	593
NLCS000506	Ruby Mountains	MT-076-001	Non-suitable	MT	DILLON FIELD OFFICE	10,659
NLCS000506	Ruby Mountains	MT-076-001	Suitable	MT	DILLON FIELD OFFICE	16,264
NLCS000499	Hidden Pasture Creek	MT-076-022	Non-suitable	MT	DILLON FIELD OFFICE	15,585
NLCS000498	Henneberry Ridge	MT-076-028	Non-suitable	MT	DILLON FIELD OFFICE	9,581
NLCS000497	Farlin Creek	MT-078-034	Non-suitable	MT	DILLON FIELD OFFICE	518
NLCS000497	Farlin Creek	MT-078-034	Suitable	MT	DILLON FIELD OFFICE	668
NLCS000494	East Fork Blacktail Deer Creek	MT-076-007	Suitable	MT	DILLON FIELD OFFICE	6,862
NLCS000491	Centennial Mountains	MT-ISA-002	Non-suitable	MT	DILLON FIELD OFFICE	24,508
NLCS000491	Centennial Mountains	MT-ISA-002	Suitable	MT	DILLON FIELD OFFICE	23,289
NLCS000487	Blacktail Mountains	MT-076-002	Non-suitable	MT	DILLON FIELD OFFICE	6,819
NLCS000487	Blacktail Mountains	MT-076-002	Suitable	MT	DILLON FIELD OFFICE	10,711
NLCS000482	Bell/Limekiln Canyons	MT-076-026	Non-suitable	MT	DILLON FIELD OFFICE	9,377
NLCS000480	Axolotl Lakes	MT-076-069	Non-suitable	MT	DILLON FIELD OFFICE	7,824
NLCS000489	Burnt Lodge	MT-065-278	Suitable	MT	GLASGOW FIELD OFFICE	6,385
NLCS000485	Bitter Creek	MT-064-356	Non-suitable	MT	GLASGOW FIELD OFFICE	60,851
NLCS000510	Square Butte	MT-ISA-004	Non-suitable	MT	LEWISTOWN FIELD OFFICE	1,953
NLCS000503	North Fork Sun River	MT-075-107	No recommendation	MT	LEWISTOWN FIELD OFFICE	194
NLCS000502	Musselshell Breaks	MT-024-677	Suitable	MT	LEWISTOWN FIELD OFFICE	88
NLCS000489	Burnt Lodge	MT-065-278	Suitable	MT	MALTA FIELD OFFICE	7,407
NLCS000512	Terry Badlands	MT-024-684	Non-suitable	MT	MILES CITY FIELD OFFICE	12,136
NLCS000512	Terry Badlands	MT-024-684	Suitable	MT	MILES CITY FIELD OFFICE	30,605
NLCS000507	Seven Blackfoot	MT-024-657C	Non-suitable	MT	MILES CITY FIELD OFFICE	11,522
NLCS000507	Seven Blackfoot	MT-024-657C	Suitable	MT	MILES CITY FIELD OFFICE	8,633
NLCS000502	Musselshell Breaks	MT-024-677	Suitable	MT	MILES CITY FIELD OFFICE	8,533
NLCS000488	Bridge Coulee	MT-024-675	Non-suitable	MT	MILES CITY FIELD OFFICE	6,022
NLCS000484	Billy Creek	MT-024-633	Non-suitable	MT	MILES CITY FIELD OFFICE	3,411
NLCS000514	Wales Creek	MT-074-150	Non-suitable	MT	MISSOULA FIELD OFFICE	11,457
NLCS000505	Quigg West	MT-074-155	Suitable	MT	MISSOULA FIELD OFFICE	515
NLCS000500	Hoodoo Mountain	MT-074-151	Non-suitable	MT	MISSOULA FIELD OFFICE	10,919
NLCS000515	Woodhawk	MT-068-246	Non-suitable	MT	UPPER MISSOURI RIVER BREAKS NM	8,029
NLCS000511	Stafford	MT-068-250	Non-suitable	MT	UPPER MISSOURI RIVER BREAKS NM	4,923
NLCS000496	Ervin Ridge	MT-068-253	Non-suitable	MT	UPPER MISSOURI RIVER BREAKS NM	10,361
NLCS000493	Dog Creek South	MT-068-244	Non-suitable	MT	UPPER MISSOURI RIVER BREAKS NM	5,140
NLCS000492	Cow Creek	MT-066-256	Suitable	MT	UPPER MISSOURI RIVER BREAKS NM	23,179
NLCS000492	Cow Creek	MT-066-256	Non-suitable	MT	UPPER MISSOURI RIVER BREAKS NM	10,479
NLCS000479	Antelope Creek	MT-065-266A	Non-suitable	MT	UPPER MISSOURI RIVER BREAKS NM	2,726
NLCS000479	Antelope Creek	MT-065-266A	Suitable	MT	UPPER MISSOURI RIVER BREAKS NM	10,186