

Conversation Contents

North Slope first cut

Attachments:

/40. North Slope first cut/1.1 nsPage.jpg
/40. North Slope first cut/2.1 image001.jpg
/40. North Slope first cut/3.1 nsPageSize300dpi.jpg
/40. North Slope first cut/3.2 image001.jpg
/40. North Slope first cut/3.3 nsPageSize300dpi.jpg
/40. North Slope first cut/4.1 image002.jpg
/40. North Slope first cut/4.2 image003.jpg

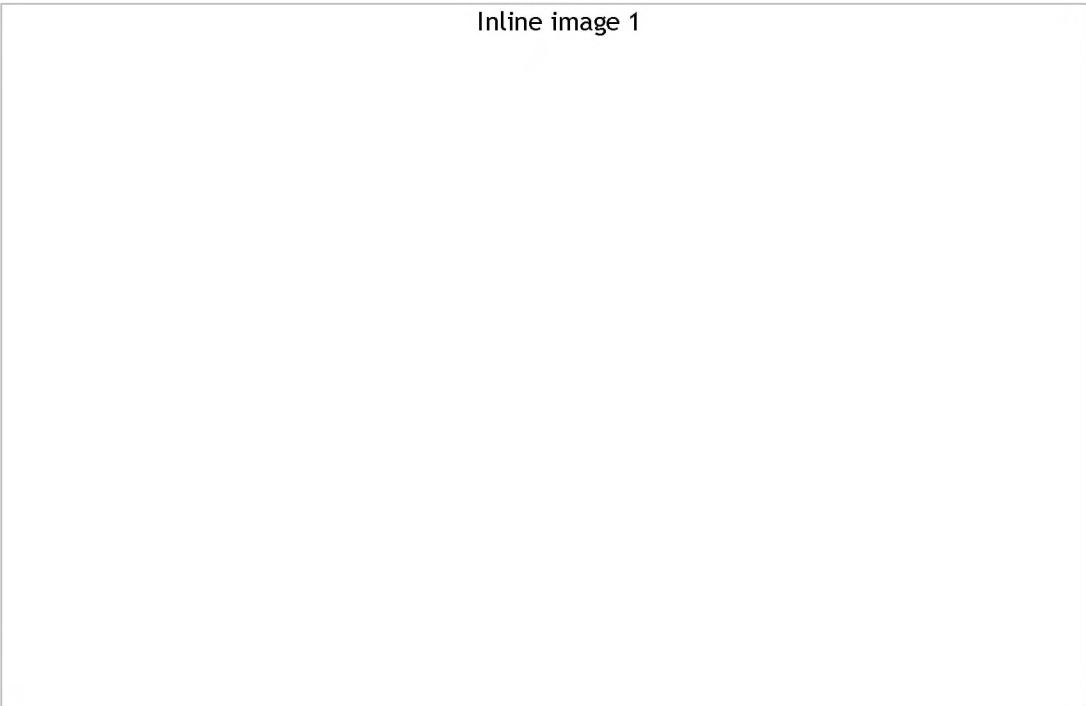
"Garrity, Christopher" <cgarrity@usgs.gov>

From: "Garrity, Christopher" <cgarrity@usgs.gov>
Sent: Wed Jun 14 2017 09:20:19 GMT-0600 (MDT)
To: Walter Guidroz <wguidroz@usgs.gov>, David Houseknecht <dhouse@usgs.gov>
Subject: North Slope first cut
Attachments: nsPage.jpg

Walter,

See below.

Inline image 1



--

-Chris

Christopher Garrity | GIScience

USGS | 12201 Sunrise Valley Drive, Reston, VA 20192 | USA

T 703.648.6426 | F 703.648.6419 (Fax)

cgarrity@usgs.gov | usgs.gov

Walter Guidroz <wguidroz@usgs.gov>

From: Walter Guidroz <wguidroz@usgs.gov>
Sent: Wed Jun 14 2017 09:52:47 GMT-0600 (MDT)
To: Christopher Garrity <cgarrity@usgs.gov>, David Houseknecht <dhouse@usgs.gov>
Subject: RE: North Slope first cut
Attachments: image001.jpg

Got it; thanks!

From: Garrity, Christopher [mailto:cgarrity@usgs.gov]

Sent: Wednesday, June 14, 2017 11:20 AM

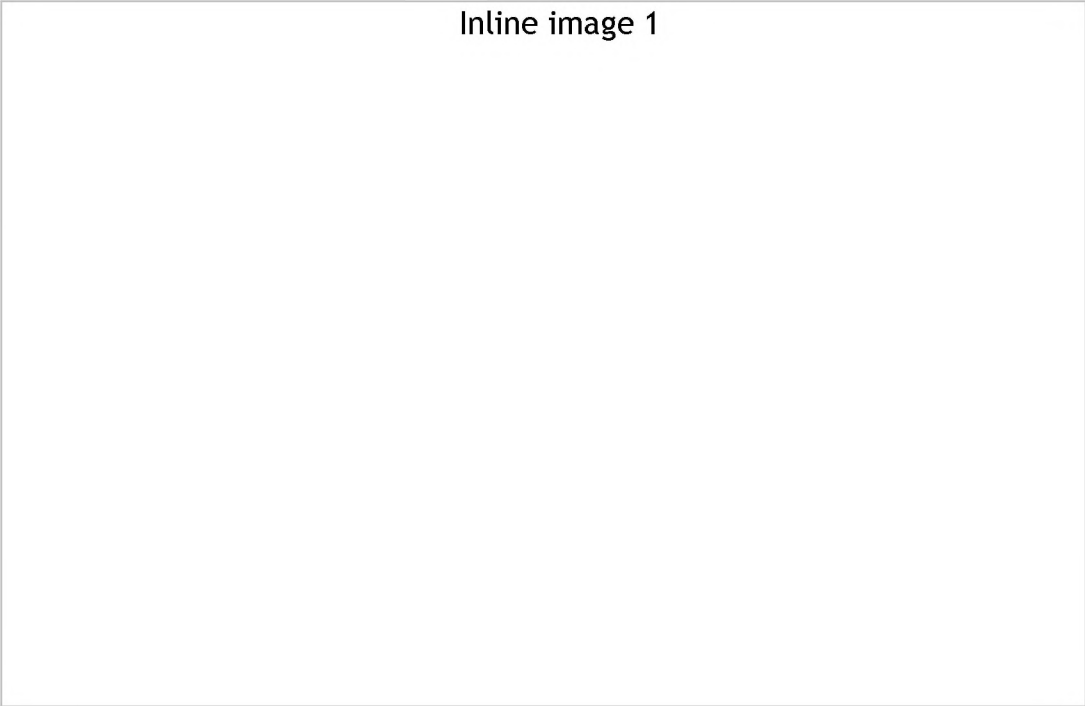
To: Walter Guidroz <wguidroz@usgs.gov>; David Houseknecht <dhouse@usgs.gov>

Subject: North Slope first cut

Walter,

See below.

Inline image 1



--

-Chris

Christopher Garrity | GIScience

USGS | 12201 Sunrise Valley Drive, Reston, VA 20192 | USA

T 703.648.6426 | F 703.648.6419 (Fax)

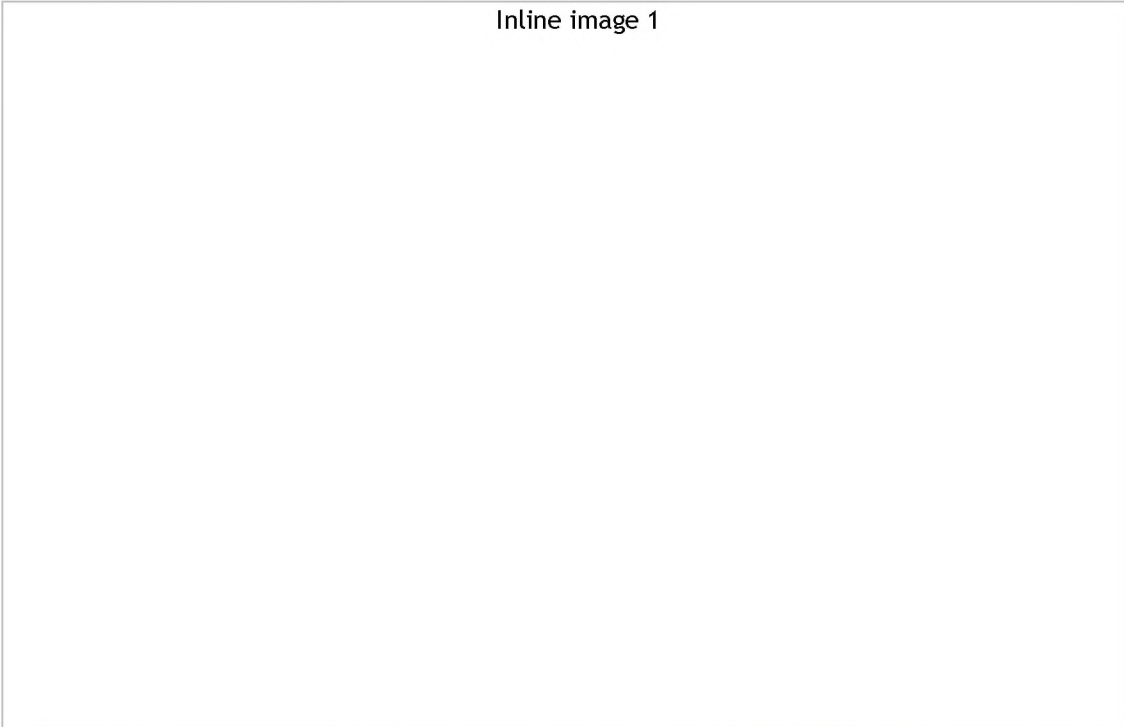
cgarrity@usgs.gov | usgs.gov

"Garrity, Christopher" <cgarrity@usgs.gov>

From: "Garrity, Christopher" <cgarrity@usgs.gov>
Sent: Wed Jun 14 2017 12:14:54 GMT-0600 (MDT)
To: Walter Guidroz <wguidroz@usgs.gov>
CC: David Houseknecht <dhouse@usgs.gov>
Subject: Re: North Slope first cut
Attachments: nsPageSize300dpi.jpg image001.jpg nsPageSize300dpi.jpg

Attached is @ full resolution if needed.

Inline image 1



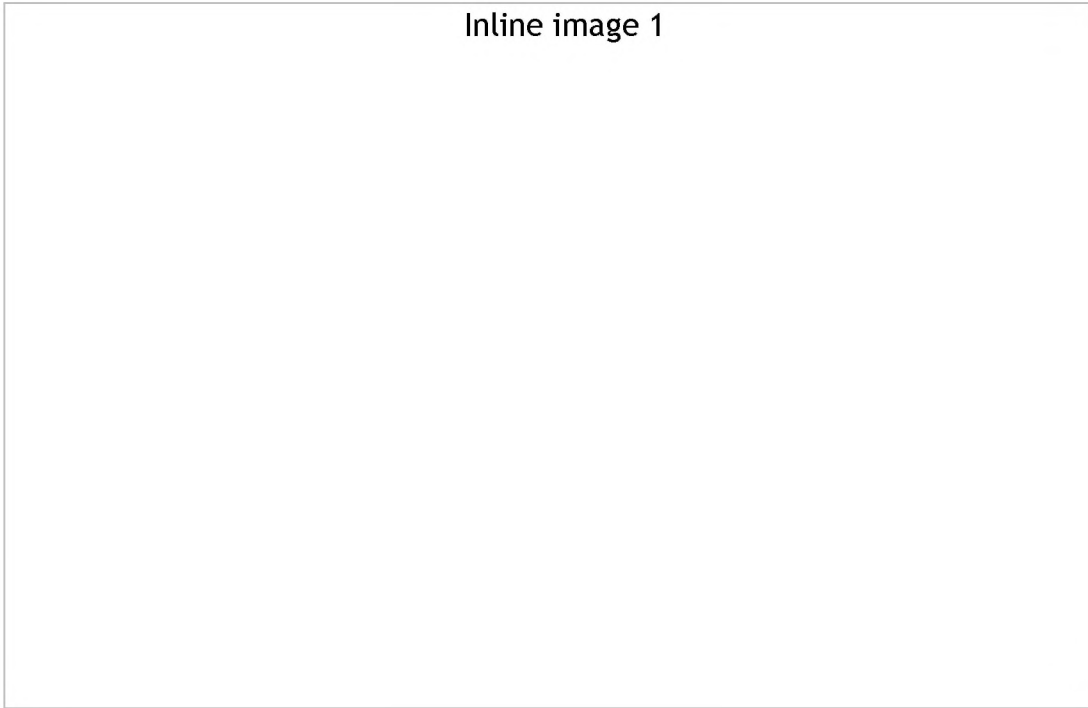
On Wed, Jun 14, 2017 at 11:52 AM, Walter Guidroz <wguidroz@usgs.gov> wrote:
[Got it; thanks!](#)

From: Garrity, Christopher [mailto:cgarrity@usgs.gov]
Sent: Wednesday, June 14, 2017 11:20 AM
To: Walter Guidroz <wguidroz@usgs.gov>; David Houseknecht <dhouse@usgs.gov>
Subject: North Slope first cut

Walter,

See below.

Inline image 1



--

-Chris

Christopher Garrity | GIScience

USGS | 12201 Sunrise Valley Drive, Reston, VA 20192 | USA

T 703.648.6426 | F 703.648.6419 (Fax)

cgarrity@usgs.gov | usgs.gov

--

-Chris

Christopher Garrity | GIScience

USGS | 12201 Sunrise Valley Drive, Reston, VA 20192 | USA

T 703.648.6426 | F 703.648.6419 (Fax)

cgarrity@usgs.gov | usgs.gov

Walter Guidroz <wguidroz@usgs.gov>

From: Walter Guidroz <wguidroz@usgs.gov>
Sent: Wed Jun 14 2017 13:59:18 GMT-0600 (MDT)
To: Christopher Garrity <cgarrity@usgs.gov>
CC: David Houseknecht <dhouse@usgs.gov>
Subject: RE: North Slope first cut
Attachments: image002.jpg image003.jpg

Thanks; we'd already sent in the document but we'll keep this if needed for backup. I'm sure we'll find use for it soon...

Walter

From: Garrity, Christopher [mailto:cgarrity@usgs.gov]
Sent: Wednesday, June 14, 2017 2:15 PM
To: Walter Guidroz <wguidroz@usgs.gov>
Cc: David Houseknecht <dhouse@usgs.gov>
Subject: Re: North Slope first cut

Attached is @ full resolution if needed.

Inline image 1



On Wed, Jun 14, 2017 at 11:52 AM, Walter Guidroz <wguidroz@usgs.gov> wrote:

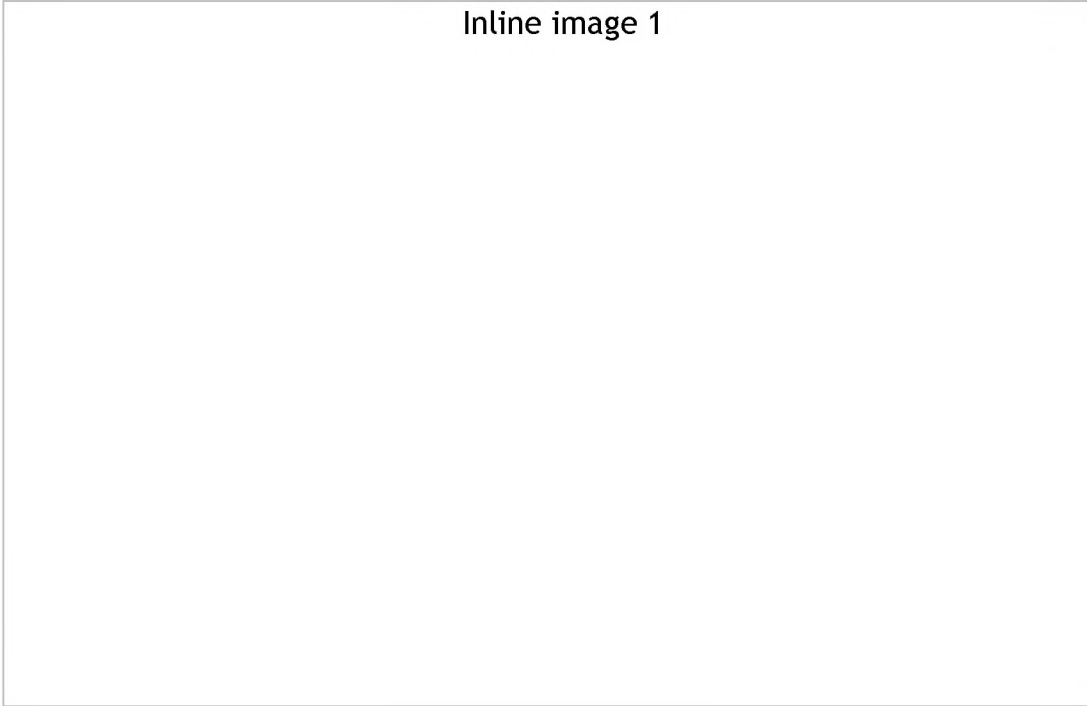
Got it; thanks!

From: Garrity, Christopher [mailto:cgarrity@usgs.gov]
Sent: Wednesday, June 14, 2017 11:20 AM
To: Walter Guidroz <wguidroz@usgs.gov>; David Houseknecht <dhouse@usgs.gov>
Subject: North Slope first cut

Walter,

See below.

Inline image 1



--

-Chris

Christopher Garrity | GIScience

USGS | 12201 Sunrise Valley Drive, Reston, VA 20192 | USA

T 703.648.6426 | F 703.648.6419 (Fax)

cgarrity@usgs.gov | usgs.gov

--

-Chris

Christopher Garrity | GIScience

USGS | 12201 Sunrise Valley Drive, Reston, VA 20192 | USA

T 703.648.6426 | F 703.648.6419 (Fax)

cgarrity@usgs.gov | usgs.gov

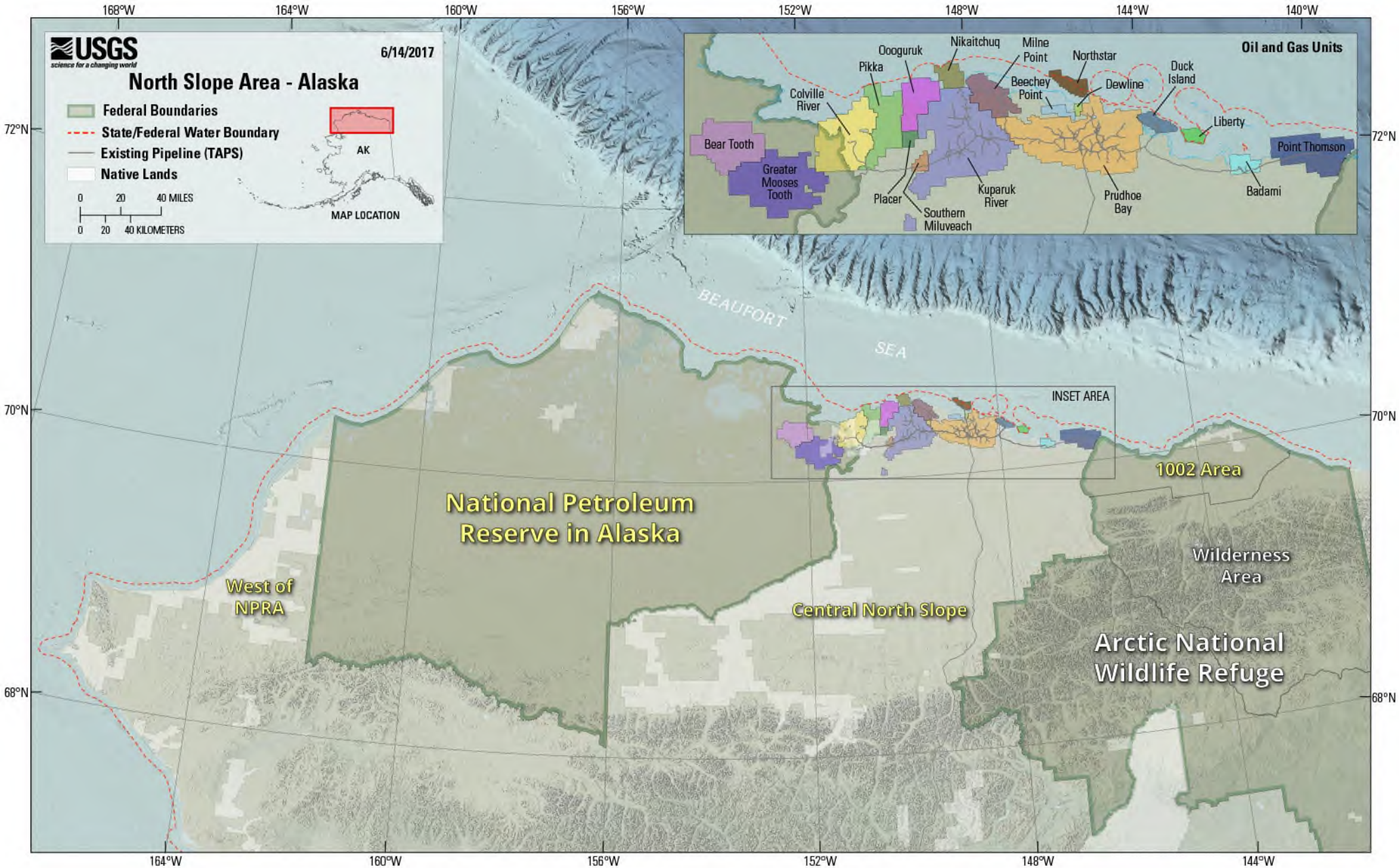


Figure 1. Map of Arctic Alaska showing oil and gas assessment areas (indicated by yellow text). Oil and gas units shown in inset map.

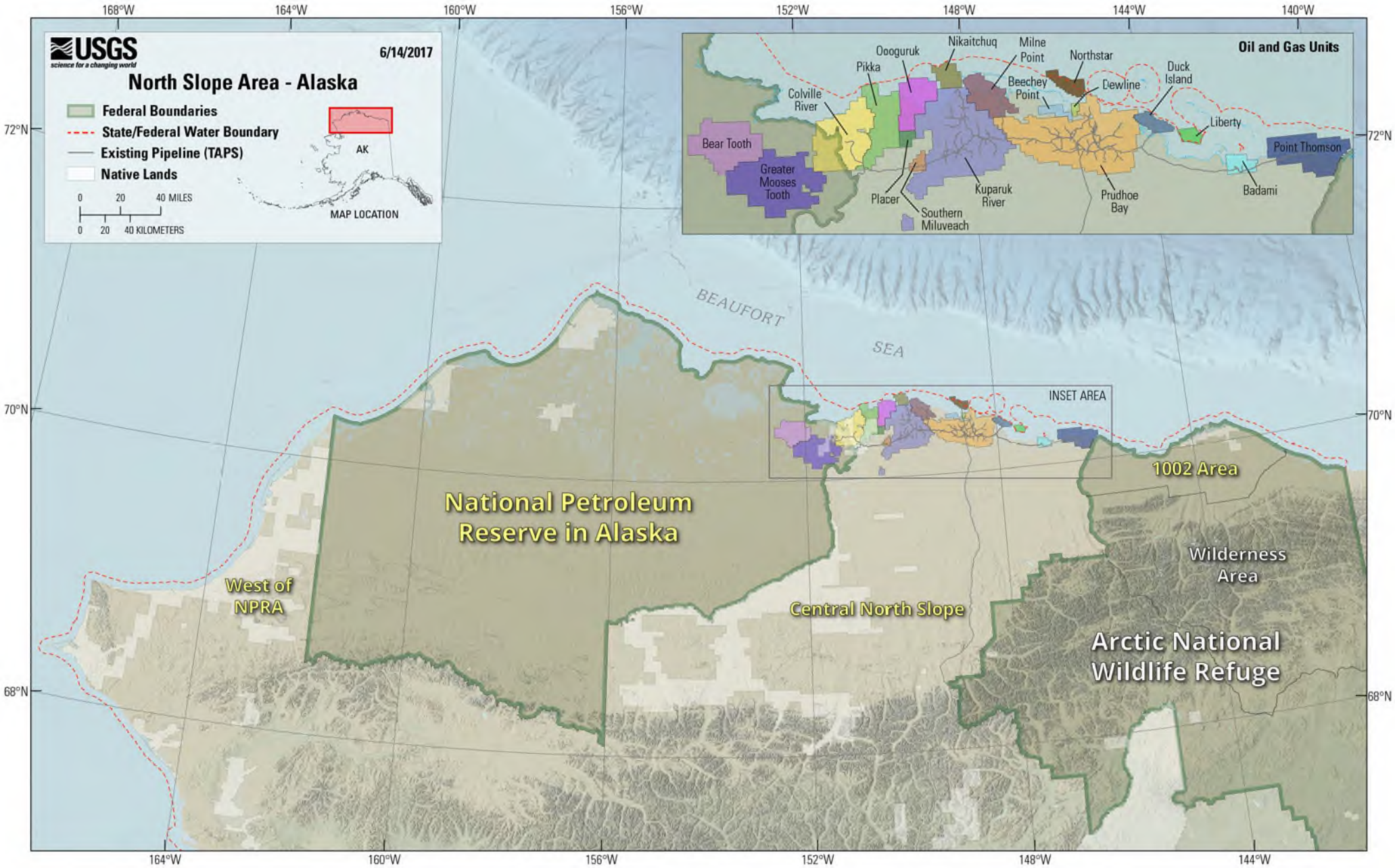


Figure 1. Map of Arctic Alaska showing oil and gas assessment areas (indicated by yellow text). Oil and gas units shown in inset map.

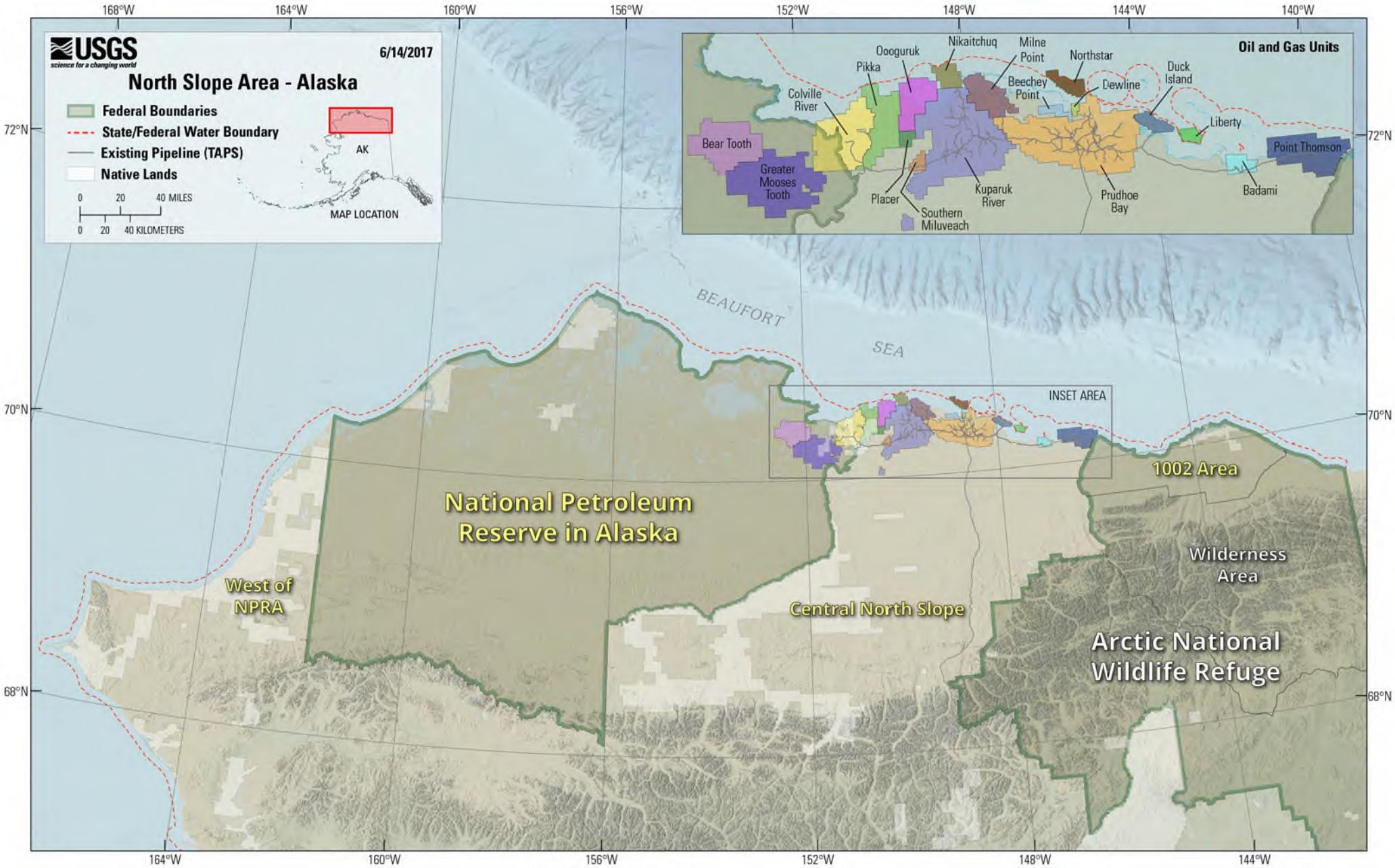


Figure 1. Map of Arctic Alaska showing oil and gas assessment areas (indicated by yellow text). Oil and gas units shown in inset map.

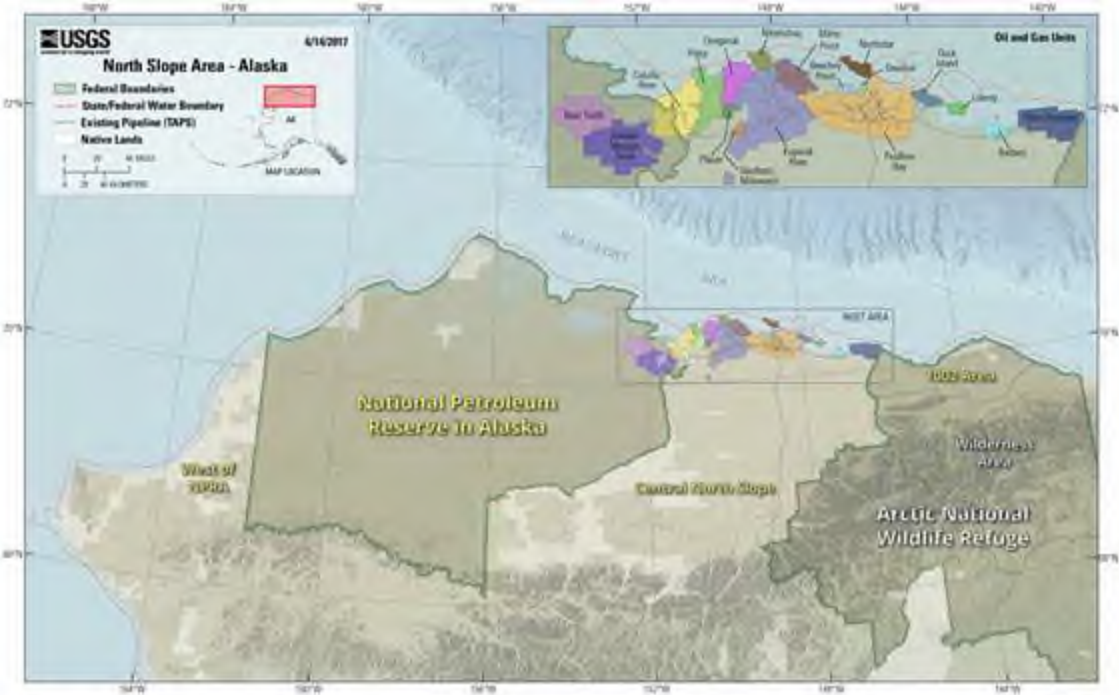


Figure 1. Map of Arctic Alaska showing oil and gas assessment areas indicated by yellow text. Oil and gas units shown in inset map.

