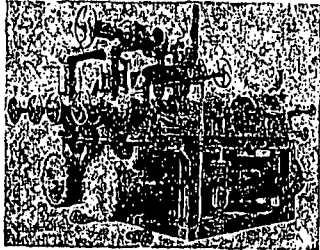


LOCKETT FUEL OIL PUMPING



AND HEATING SETS

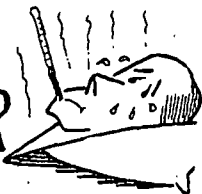
The compact, high-pressure unit illustrated here was built for a large Utility Station in the South West. It consists of two Motor-driven Pumps and two Shell-and-tube-type Oil Heaters mounted on a single frame. Each pump is designed to handle a capacity of 33,000 pounds per hour of bunker fuel oil, against 300 P.S.I.

Custom Built

For almost a half century, Lockett has been supplying, to fit individual needs, efficient standard and custom-built, Fuel Oil Pumping and Heating Sets, for mechanical and steam atomizing oil burners. Combinations of various types of pumps are available: Either two Turbine-driven Pumps; one Electric-driven and one Turbine-driven Rotary Pump; two Electric-driven Rotary Pumps; two Worthington Duplex Steam Pumps; or one Duplex Steam Pump and one Electric-driven Pump. Each pump-and-heater is suitable for the full rated capacity of the unit; the second pump and heater are spares. Lockett supplies everything, complete. Inquiries are invited. Descriptive bulletins sent on request.

A. M. LOCKETT & COMPANY, LTD.
Contracting Mechanical Engineers
NEW ORLEANS - HOUSTON - DALLAS - GALVESTON

HIGH FEVER

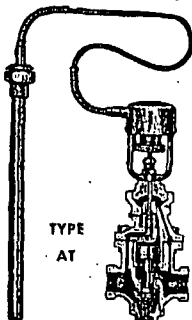


- Wide Temperature Ranges
- Sensitive Control
- Pressures 20 to 250 psi
- Size 1/2 to 6"
- Easily Adjustable
- Low Maintenance

due to
FAULTY TEMPERATURE CONTROL

cure it
with... **KECKLEY**
TEMPERATURE REGULATORS

If you're in a feverish sweat because of a tough temperature regulating problem, you can get your misery far more by standardizing on Keckley. Keckley regulators offer you positive, accurate control of kettle, vat, water heaters, or whatever temperature control is needed. You get extreme sensitivity and wide selection of temperature ranges, from -40° to 340° F. No decrease in maximum pressure at 250 psi as size increases. This valve incorporates Keckley's basic Type AA regulator, interchangeable with their pressure, temperature and combination control units for simplified maintenance. Give complete requirements listed, including operating temperature range desired. Check with Keckley today!



TYPE
AT

SEND FOR YOUR COPY
OF CATALOG NO. 53A

O. C. KECKLEY COMPANY
400 W. MADISON STREET CHICAGO 6, ILLINOIS

More FREE BULLETINS

1 1/2 in. discharge, capacity to head to 112 ft. 4 pages. Bulletin Carver Pump Co. Muscatine, Iowa.

48 Multi-Stage Pumps—3, 4 and 5 stages, split-case pumps, 1 1/2 in. to 2000 gpm and heads to 1000 ft. temps to 300 P. 18 pages. Bulletin Peerless Pump Div. Peerless Machinery & Chemical Corp. 101 W. 26, Los Angeles 21, Calif.

49 Centrifugal Pumps—single and double suction, made in 12 sizes to 33,000 gpm. heads to 112 ft. 24 pages. Bulletin Chalmers Mfg. Co. 888 S. 74th St. Milwaukee, Wis.

50 Centralized Volume Pump—positive displacement, either simplex or duplex, 1 1/2 to 16 gph. 4 pages. Bulletin H-10-M. Milton E. Hill 15 Mermald Lane, Philadelphia 19, Pa.

51 Chemical Feeder—automatic and proportional, hydraulically actuated, controlled by standard water partitions. Inc. P. O. Box 1414, Providence 1, R. I.

52 Diaphragm Feeder—positive displacement, positive displacement, used for water to hydrofluoric acid. 4 pages. File 1801-1. Proportioning, Inc. P. O. Box 1414, Providence, R. I.

53 Industrial Waste Treatment—mixing wastes, processes, equipment. 8 pages. Bulletin B-10-F. H. F. Industries, P. O. Box 1414, Providence 1, R. I.

54 Mole and Emergency Sterilization—of newly laid water piping, mains, etc. Statistical chart. 1 page. Proportioning, Inc. P. O. Box 1414, Providence 1, R. I.

PRIME MOVERS AND ACCESSORIES

55 Diesel Engines—What You Should Know About Them, gives history, design, operation and latest developments in non-technical language. 2 pages. P. & H Diesel Div. Harbach Corp. Crystal Lake, Ill.

56 Spark-Fixed Gas Engines—1 1/2 to 2 1/2 cycle, 8 and 13 in. bore sizes, to 245 hp. 4 pages. Bulletin 881. Nordberg Mfg. Co. Milwaukee 1, Wis.

57 Dual Fuel Engines—two cycle, 1 1/2, 2 and 30 in. bore, 16 pages. Bulletin 302. Nordberg Mfg. Co. Milwaukee 1, Wis.

58 Water Side Interiors—of Diesel Engine Cylinder Liners, reprint gives reasons and preventive measures. 8 pages. The International Nickel Co. New York 5, N. Y.

59 Stationary Diesels—dimensions, weight, technical data of engines sized 8 to 71 hp at 1800 to 1800 rpm and 16 to 24 hp at 1800 to 1800 rpm. 4 pages each. Bulletin 1808 and 1811. The National Supply Co. Engine Div. Springfield, Ohio.

60 Diesel Engines—165 and 184 hp at 3400 rpm, vertical and horizontal in both models. 8 pages. Bulletin 1812. The Coach Co. Kent, Ohio.

61 Automatic Engine Stop Valve—application, installation, dimensions and design. 8 pages. Bulletin 61. Golden-Anderson Valve Specialty Co. 1070 Keanon Blvd. Pittsburgh 21, Pa.

62 Flow Control Valve—to control the speed of piston and control cylinder, one valve controls each cylinder in one direction. 8 pages. Bulletin 610. Air-Cor. 1311 Atlantic Ave. Cleveland 5, Ohio.

MISCELLANEOUS

63 Pneumatic Tubes—for fast paper work communication between floors and shops. 50 pages. Bulletin "Target". Latham Corp. 1000 N. W. 42nd St. Miami 17, Fla.

64 Isotope Chart-of nuclides, 50 to 80 in. includes nearly 1300 isotopes.



CMH
One dependable source for every flexible metal hose requirement

CMH corrugated hose is available with metal braid covering or unbraid in steel, bronze or stainless steel. Used where great flexibility is required at high temperatures and high pressures. Sizes range from 1/4" I.D. to 24" I.D. Depending on size, type and material, it will handle burst pressures to 12,000 psi, temperatures to 1200° F.

CMH interlocked hose is available in various types, packed and unpacked, in steel, stainless steel, bronze, aluminum, brass and other metals. It is used for steam, exhaust, tar and asphalt, etc. Sizes 1/4" to 12", I.D. Depending on size, type and material, it may be used for working pressures to 750 psi (constant), temperatures to 600° F.

CMH square locked hose is available unpacked or with a choice of several types of packing in steel, bronze, brass, aluminum, stainless steel, etc. It is used as conduit, cable armor, nozzles and many similar applications. Sizes range from 1/4" to 1", I.D. Normally used only at very low pressures.

CMH double groove (ball bearing design) hose is available in bronze, steel or stainless steel with asbestos packing and with or without metal braid covering. Widely used for non-searching liquids and gases at low to moderate pressures and temperatures. Sizes range from 1/4" to 1 1/4", I.D.

Standard assemblies and special purpose flexible metal hose items are manufactured for such services as steam, tar and asphalt, machine tool coolants, machine tool wiring conduit, dry granular products. We will be pleased to send data on any specific requirement.

For full information on all CMH hose products write for Catalog 130 or see the Flexonics catalogs in Sweet's Plant Engineering File, Chemical Engineering Catalog and The Refinery Catalog. For maintenance data, see the classified pages of your telephone directory for the name of your CMH distributor.

CHICAGO METAL HOSE Division
Flexonics Corporation 1301 South Third Avenue, Maywood, Illinois

In Canada: Flexonics Corporation of Canada, Ltd., Brampton, Ontario

Flexible metal hose Expansion joints Aircraft components Metallic bellows and bellows assemblies